

PASSTCERT

QUESTION & ANSWER

Higher Quality
Better Service!

We offer free update service for one year
[HTTP://WWW.PASSTCERT.COM](http://www.passtcert.com)

Exam : **050-704**

Title : Novell Open Enterprise
Server for Linux+ZENworks

Version : DEMO

1.By default, the iPrint system uses port _____ to send non-secure print jobs. Answer:

A.PORT631

Correct:A

2.When migrating volumes from a NetWare server to an OES Linux server, which are considerations you should keep in mind? (Choose 2.)

A.Open files on the source volume won't be migrated, by default.

B.The creation date of the files on your migrated volume will be reset to the current date.

C.Linux User Management must be disabled on the destination server before starting the migration.

D.If the source NetWare volume is part of a server cluster and it fails over during the migration, the Server Consolidation utility can continue the migration process using a redundant server in the cluster.

E.The file ownership attribute is not preserved when migrating NetWare NSS volumes to OES Linux volumes.

F.You will lose all trustee rights assignments when migrating a traditional NetWare volumes to OES Linux NSS volumes.

Correct:A B

3.You've just completed an upgrade of a NetWare 5.1 server to OES NetWare. You now need to install additional products. Which utilities can you use to do this? (Choose 2.)

A.iManager

B.Remote Manager

C.Deployment Manager

D.Novell Application Manager

E.The Install utility in the OES NetWare server GUI

Correct:C E

4.Your organization's eGuide service is installed on an OES Linux server with a DNS domain name of da12.da.com. You've configured eGuide to use eDirectory as its LDAP directory service. Your users need to access the eGuide service from their workstations using a web browser . What URL should they use to do this? Answer:

A.HTTP://DA12.DA.COM/EGUIDE

Correct:A

5.You're setting up an iFolder server in your network that will service 1800 users. The server uses a dual Pentium 4 CPU motherboard and a 500 GB RAID 3 storage array. The server is connected to workstations through a Gigabit twisted-pair Ethernet network. Does this system meet Novell's recommended design guidelines for iFolder?

A.Yes, all recommendations are met.

B.No, iFolder is not multiprocessor-enabled.

C.No, iFolder does not support RAID 3 storage devices.

D.No, a single iFolder server should serve a maximum of 1000 users.

E.No, iFolder should be implemented on a fiber-optic Ethernet network.

Correct:D

6.You're planning the deployment of a new Open Enterprise Server network. You will create a new eDirectory tree with the first OES server you install. Each server in the tree will function in a specified role. You plan to install the following servers: . DA1. DA1 will be an OES Linux server that will run NCP Server and contain NSS volumes. . DA2. DA2 will be an OES Linux server that will run NCP Server and NSS. It will also be used to create an iSCSI SAN using the other servers in

the network. . DA3: DA3 will be an OES Linux server that will run NCP Server, NSS, and iFolder. . DA4: DA4 will be an OES Linux server that will run NCP Server, NSS, and NetStorage. . DA5: DA5 will be an OES Linux server that will run iManager to provide remote management services for the entire network. Which server should be the first server installed in the eDirectory tree?

- A.DA1
- B.DA2
- C.DA3
- D.DA4
- E.DA5

F.It doesn't matter which OES server is installed first in the eDirectory tree.

Correct:F

7.Which file is used to configure the OpenSSH service on your OES Linux server?

- A./etc/sshd.conf
- B./etc/ssh/sshd.conf
- C./etc/sysconfig/sshd
- D./etc/ssh/sshd_config
- E./etc/rc.d/init.d/sshd

Correct:D

8.Which version of eDirectory is installed by default after a NetWare 5.1 server is upgraded to OES NetWare?

- A.eDirectory 8.9
- B.eDirectory 8.8
- C.eDirectory 8.5.7
- D.eDirectory 8.7.3
- E.eDirectory 8.6.5

Correct:D

9.Click the Point & Click button to begin. You need to configure a Universal Password Policy to allow users connecting to your OES Linux system to authenticate to the Novell Samba service on the server. Click the iManager category you would use to do this.



Correct:

10. You need to deliver applications to your users and workstations that reside in remote locations outside your organization's firewall. What is required to accomplish this using ZENworks Desktop Management?

- A. Load Nal.nlm with the -N switch.
- B. Implement the ZENworks Middle-Tier server.
- C. Load Appman.nlm with the -PASSTHROUGH switch.
- D. Enable dynamic NAT passthrough on the server where ZENworks is installed.

Correct: B

11. You are implementing NetStorage on an OES Linux server. You need to configure a file access protocol on the server to provide NetStorage users with access to the Linux file system. Which of the following can do this? (Choose 2.)

- A. AFP
- B. NFS
- C. DEC
- D. NSS
- E. NIS
- F. Samba
- G. NetBIOS
- H. NCP Server

Correct: F H

12. You're implementing iFolder 3.1 on an OES Linux server. The iFolder implementation will service 250 users. It uses a dual Xeon CPU motherboard and a 300 GB SCSI RAID 5 array. The server is connected via fiber-optic network cables to your organization's Ethernet network. Your

OES Linux server has eDirectory, NSS, and iManager installed. Can iFolder 3.1 be implemented on this system?

- A.No, iFolder 3.1 doesn't support RAID arrays.
- B.No, iFolder 3.1 isn't multiprocessor-enabled.
- C.No, iFolder 3.1 can't be implemented on OES Linux.
- D.No, iFolder 3.1 doesn't support the NSS file system.
- E.Yes, this system meets the recommended guidelines.
- F.No, iFolder 3.1 on OES Linux should service a maximum of 250 users.

Correct:E

13.You are configuring your OES Linux server to get its time using the NTP protocol from an NTP time provider with an IP address of 10.200.200.1. You've opened /etc/ntp.conf in a text editor. Which directive will configure your server to get its system time from this provider?

- A.server 10.200.200.1
- B.provider 10.200.200.1
- C.ntp-time 10.200.200.1
- D.ntp-server 10.200.200.1
- E.get-time 10.200.200.1
- F.get server time 10.200.200.1
- G.set time source=10.200.200.1

Correct:A

14.You have mounted a floppy diskette on your OES Linux server in the /media/floppy directory. Enter the command you would use to dismount the diskette prior to removing it from the system:

Answer:

- A.UMOUNT/DEV/FD0,UMOUNT/MEDIA/FLOPPY

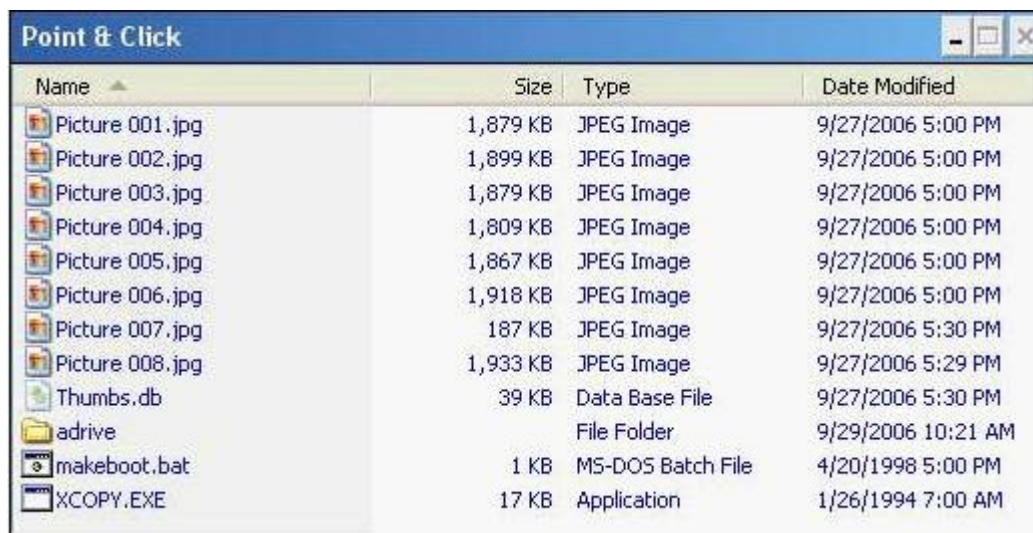
Correct:A

15.What is the largest upload file size supported by iFolder 3.x Web Access?

- A.1 MB
- B.4 MB
- C.8 MB
- D.10 MB
- E.16 MB
- F.iFolder 3.x Web Access has no upload file size limit.

Correct:D

16.Click the Point & Click button to begin. Click on the file or folder in this directory that iFolder will automatically exclude from synchronization by default.



Correct:

17. Click the Point and Click button to begin. You are managing an OES Linux server. You have an application running in a second virtual desktop that you want to use. Click on the icon you would select to switch to the second virtual desktop.



Correct:

18. When configuring a Workstation package, policies are available under 6 categories: General, Windows 9x, Windows NT-2000-XP, Windows NT, Windows 2000, and Windows XP. Which policies can be configured under the General policies category? (Choose 3.)

- A. Novell iPrint
- B. Windows Group
- C. Remote Control
- D. Workstation Imaging
- E. Computer Extensible
- F. Workstation Inventory

Correct: A C D

19. When defining a share in the Novell Samba configuration file, which instruction, is used to specify whether the share will be automatically displayed in My Network Places or Network Neighborhood on a Windows client system?

- A. public = yes
- B. viewable = yes
- C. writable = yes
- D. guest ok = yes
- E. printable = yes
- F. browseable = yes
- G. showashomes = yes
- H. displayonclient = yes

Correct:F

20.You are planning a deployment of an OES Linux server in your network. This server needs to provide the following: Automatic host configuration using DHCP. NSS volumes. Name resolution using DNS. Support for Windows workstations using the Client for Microsoft Networks. Junctions to other NSS volumes in the network using Distributed File Services (DFS). Can this be done?

- A.No, OES Linux doesn't support DFS.
- B.No, OES Linux doesn't support NSS volumes.
- C.No, OES Linux doesn't provide DNS services.
- D.No, OES Linux doesn't provide DHCP services.
- E.Yes, these services can be configured on OES Linux.
- F.No, OES Linux doesn't support Windows workstations using the Client for Microsoft Networks.

Correct:A