

PASSTCERT

QUESTION & ANSWER

Higher Quality
Better Service!

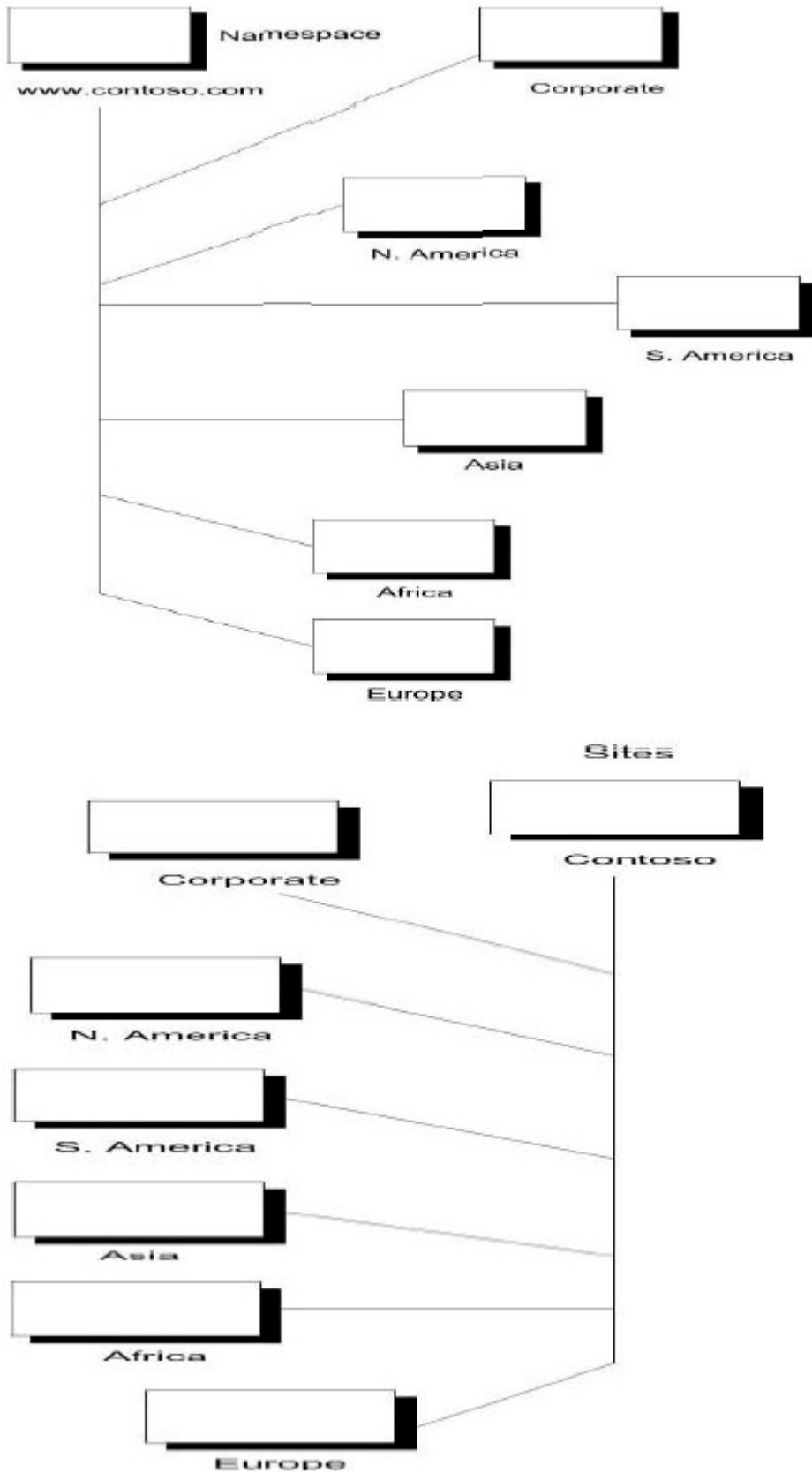
We offer free update service for one year
[HTTP://WWW.PASSTCERT.COM](http://www.passtcert.com)

Exam : 070-225

Title : Designing and Deploying a
Messaging Infrastructure
with Microsoft Exchange
2000 Server

Version : Demo

1.Introduction: You are hired by Contoso, Ltd., to upgrade its existing Exchange Server environment to Exchange 2000 server. Background: History: Contoso, Ltd., is an agricultural research company. The company's headquarters is located in Bismarck. The company has hundreds of offices and research factories, which are located all over the world. The company employs approximately 10,000 computers. A large company named Enchantment Lakes Corporation owns Contoso, Ltd. The headquarters Enchantment Lakes Corporation is located in New York. Contoso, Ltd., exercises complete control of over its own business. Contoso, Ltd., recently acquired a small agricultural research company that has offices in Calcutta, Milan and Tripoli. Company Profile: Contoso, Ltd., specializes in crop development, generic manipulation and the sale of seeds. The company's primary customers are farmers and government agencies. The company has approximately 10,000 Exchange Server mailboxes. Bismarck headquarters employs approximately 5,000 people. Each of the other regional offices in the following cities employs 750 and 1,000 people. Bonn Cairo Hong Kong Rio de Janeiro The other company locations each employ between 5 and 100 people. Network planning is preferred in Bismarck. Each regional office has an IT staff that is responsible for the day-to-day operations of the servers and network connections in that office. Factors that influence Business Strategies: Communication and collaboration are very important at Contoso, Ltd., The company believes that it will succeed if it can successfully communicate its message to employees, to customers and to shareholders. Contoso, Ltd., will continue to operate as an independent company. However, employees of Contoso, Ltd., will continue to communicate much more frequently with Enchantment Lakes Corporation in the future. Existing IT Environment: Directory Design: The Contoso, Ltd., Active Directory design is shown in the Exhibit.



Answer:

2.How should you design an Instant Messaging solution for Contoso, Ltd., to enable communication with Enchantment Lakes Corporation?

A.Create an SRV record for _rvp service on Contoso, Ltd's internal DNS Server. Place the Instant Messaging Router in the Perimeter Network (DMZ) Use e-mail addresses for users to access Instant Messaging. Create an SRV record for _rvp service on external DNS Server. Place the Instant Messaging Router in the Perimeter Network (DMZ) Use e-mail addresses for users to access Instant Messaging.

B.Create an SRV record for _rvp service on external DNS Server. Place the Instant Messaging Router in the Perimeter Network (DMZ) Use the alias@en.contoso.com address for users to access Instant Messaging.

C.Create an SRV record for _rvp service on internal DNS Server. Place the Instant Messaging Router in the Perimeter Network (DMZ) Use the alias@en.contoso.com address for users to access Instant Messaging.

Answer:A

3.What should you do to enable communication between Contoso, Ltd., and newly acquired research facilities until the facilities are fully integrated into the organization?

A.Implement an X 400 connector or an SMTP connector on the front-end mail Server at Bismarck headquarters.

B.Implement an X 400 connector or an SMTP connector on the back-end mail Server at Bismarck headquarters.

C.Implement an X 400 connector, or use the current SMTP connector that is on one of the SMTP connector servers.

D.Implement a dedicated Server for foreign connectors at the regional office that is nearest to the office that needs to communicate with the new research facility.

Answer:D

4.What should you do to add to Contoso, Ltd's DNS Server SRV records to accommodate unified namespace for instant Messaging?

A._rvp_tcp.contoso.com SRV 0.0.80 M1.contoso.com _rvp_tcp.contoso.com SRV 10.0.80 M2.contoso.com

B._rvp_tcp.contoso.com SRV 10.0.443 M1.contoso.com _rvp_tcp.contoso.com SRV 10.0.80 M2.contoso.com

C._rvp_tcp.contoso.com SRV 0.0.80 BismarckM1.contoso.com _rvp_tcp.contoso.com SRV 10.0.80 BismarckReg1.contoso.com

D._rvp_tcp.contoso.com SRV 10.0.443 BismarckM1.contoso.com _rvp_tcp.contoso.com SRV 10.0.80 BismarckReg1.contoso.com

Answer:A

5.How should you modify the Exchange architecture to fulfill the requirements for Outlook Web Access?

A.Place front-end servers in Bismarck office to service back-end servers in all regions.

B.Place front-end servers in Bismarck, Bonn, Cairo, Hong Kong and Rio de Janeiro regional offices to service all back-end servers.

C.Place front-end servers in the Bismarck, Athens, Bonn, Canberra and Rio de Janeiro offices to back-end servers within their respective regions.

D.Place front-end servers in the Bismarck, Athens, Bonn, Canberra and Rio de Janeiro offices to service back-end servers in the Bismarck, Athens, Bonn, Canberra and Rio de Janeiro offices respectively.

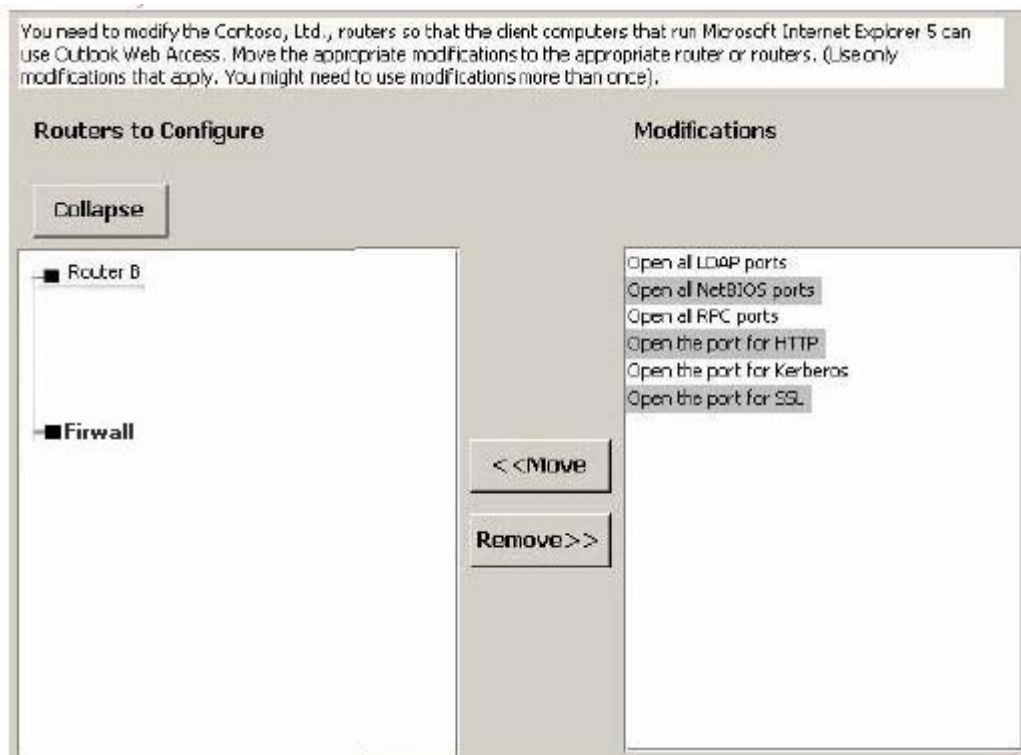
Answer:B

6.How should you configure the Active Directory Connector (ADC) for Contoso, Ltd before the company upgrades to Exchange 2000 Server?

- A.Continuously replicate the directory data from Exchange Server 5.5 to Windows 2000. Continue to make revisions in the Exchange Server 5.5 directory until Exchange 2000 is fully implemented.
- B.Continuously replicate the directory data from Windows 2000 to Exchange Server 5.5. Make revisions in Windows 2000 directory.
- C.Perform a one-time export of the directory data from Exchange Server 5.5 to Windows 2000. Make revisions in Windows 2000, and export the directory data back to the Exchange Server 5.5 directory.
- D.Perform a one-time export of the directory data from Exchange Server 5.5 to Windows 2000. Make revisions in Windows 2000, but do not export the directory data back to the Exchange Server 5.5 directory.

Answer:B

7.Contoso, Ltd's connection to Outlook web Access is shown in the Exhibit.



Answer:

- Green choice4---->Yellow Choice1
- Green choice6---->Yellow Choice2
- Green choice2---->Yellow Choice3
- Green choice3---->Yellow Choice4
- Green choice5---->Yellow Choice5
- Green choice4---->Yellow Choice6
- Green choice6---->Yellow Choice7

8.How should you design an Exchange 2000 server data recovery solution for Contoso, Ltd.?

- A.Place recovery servers in the Bismarck, Cairo and Milan offices. Restore information store databases for the Bismarck office and for offices that do not have mail servers.
- B.Place recovery servers in the Bismarck, Calcutta and Tripoli offices. Restore information store databases for the Bismarck office and for offices that do not have mail servers.
- C.Place recovery servers in the Bismarck, Bonn, Cairo, Hong Kong and Rio de Janeiro offices. Restore information store databases for the respective regions of those offices.

D.Place recovery servers in the Bismarck office. Restore information-store databases for the entire company.

Answer:C

9.What are the two possible ways to fulfill the security requirements for the executives? (Choose Two)

A.Implement the L2TP/IPSec between Enchantment Lakes Corporation and the client computers of the executives of Contoso, Ltd.,

B.Implement PPTP/IPSec between Enchantment Lakes Corporation and the client computers of the executives of Contoso, Ltd.,

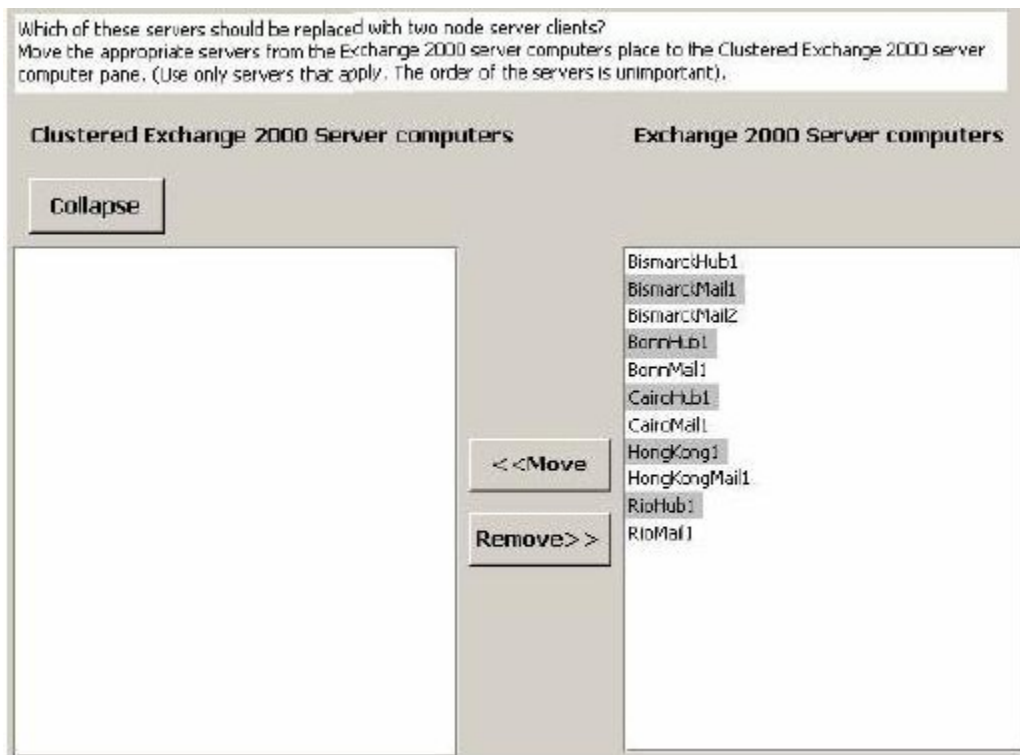
C.Implement secure MIME at Enchantment Lakes Corporation and at Contoso, Ltd.,

D.Implement digital certificates at Enchantment Lakes Corporation and at Contoso, Ltd.,

E.Require executives to use Outlook Web Access, and require SSL for all Outlook Web Access connections.

Answer:C D

10.The Contoso, Ltd., mail environment is shown in the exhibit.



Answer:

Green choice2---->Yellow Choice1

Green choice3---->Yellow Choice2

Green choice5---->Yellow Choice3

Green choice6---->Yellow Choice4

Green choice9---->Yellow Choice5

Green choice11---->Yellow Choice6

11.How should you enable users in Milan to access e-mail after Exchange 2000 server is implemented?

A.Implement Outlook Express on all client computers at the Milan office and configure the client computers for POP3 mail. Enable POP3 protocol on the mail server at Bonn office.

B.Implement Outlook Express on all client computers at the Milan office and configure the client

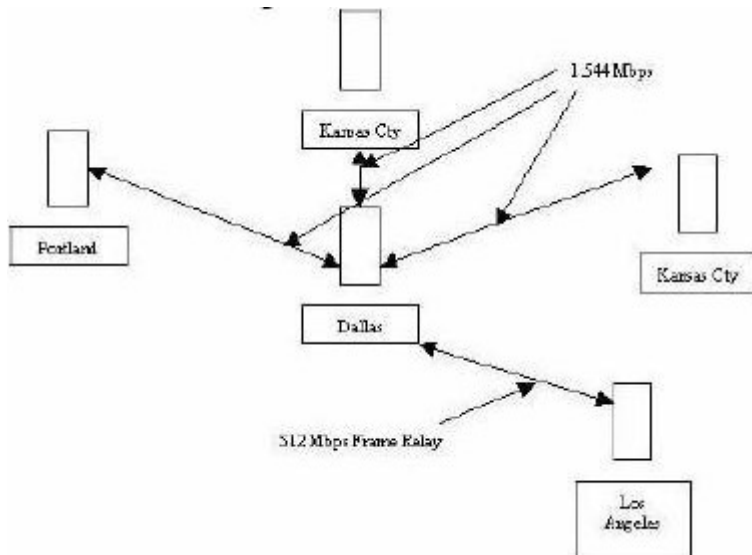
computers for IMAP4. Enable IMAP4 protocol on the mail server at Bonn office.

C.Implement Outlook Express on all client computers at the Milan office. Enable HTTP protocol on the mail server at Bonn office.

D.Implement Outlook 2000 in Corporate or Workgroup mode on all client computers at the Milan office.

Answer:

12.Introduction: You are hired by Hiabuv Toys to assist the company with migrating its messaging system from Exchange Server 5.5 to Exchange 2000 Server. You need to evaluate the company's current messaging infrastructure, access current and future business needs, and design and deploy Exchange 2000 Server in the company's environment. Background: Company Profile: Hiabuv Toys designs and sells high-quality electronic toys. The company sells its products through its web site, catalog distributors and rental stores. The company has 8,000 employees in five U.S locations. Company headquarters are located in Portland. Office locations and number of employees are shown in the list. Location Employees Chicago 2,000 Dallas 600 Kansas City 1,500 Los Angeles 800 Portland 3,000 Business Plan: Hiabuv Toys currently develops new toys. The company actively seeks customer feedback on how to improve its products. Existing IT Environment: Network Infrastructure: The network diagram is shown in exhibit.



Answer:

13.How should you configure the Active Directory Connector (ADC)?

A.Configure a one-way connection agreement from Active Directory to each Exchange Server 5.5 site.

B.Configure a one-way connection agreement from Exchange Server 5.5 site to Active Directory.

C.Configure a two-way connection agreement between Exchange Server 5.5 site and Active Directory.

D.Configure a two-way connection agreement between the hub Exchange Server 5.5 site and the root domain in the Active Directory forest.

Answer:A

14.What should you do to minimize the effect of denial of service attacks on the Server that is used by company employees for remote e-mail access?

A.Use two storage groups on the Exchange 2000 Server computer that provides Internet mail access.

B.Place two front-end Exchange 2000 Server computers in a perimeter network. (DMZ).

C.Enable IPSec on the Exchange 2000 Server computer that provides Internet mail access.

D.Enable SSL connections on the Exchange 2000 Server computer that provides Internet mail access.

Answer:B

15.Which permission should you designate to the Exchange administrators in the Portland office?

- A.Exchange Administrator
- B.Exchange Full Administrator
- C.Exchange View Only Administrator
- D.Enterprise Administrator

Answer:B

16.How should you implement a fault-tolerant configuration for users who access e-mail by using Outlook 2000?

- A.Use two front-end servers in each office.
- B.Use clustered Exchange 2000 mailbox Servers.
- C.Use an Exchange 2000 directory Server in Portland office.
- D.Use an Exchange 2000 public-store Server in the Chicago office.

Answer:B

17.You are designing a collaboration service that will fulfill the company's business requirements. How should you ensure that the service could be used by internal users and with suppliers?

- A.Use an Exchange 2000 Server computer running the Chat service in auditorium mode. Create a Web site that suppliers can access.
- B.Use a dedicated Exchange 2000 client Server running the Chat service in moderated mode. Create a Web site that suppliers can access.
- C.Use a dedicated exchange 2000 Instant Messaging Server. Allow internal employees to use Instant Messaging. Enable suppliers to access the Hiabuv Toys instant Messaging Server.
- D.On an exchange 2000 Server computer, create a public folder for each supplier. Create an SMTP connector that will be used to replicate the contents of these public folders to the suppliers.

Answer:C

18.How should you provide a redundant front-end Server configuration to support users who access their e-mail from home?

- A.Install two Windows 2000 Server computers that run Routing and Remote Access. Connect modems to each of these servers.
- B.Use two storage groups on each Exchange 2000 Server computer. Use one storage group to support users who access e-mail from home, and the other storage groups to support users who access e-mail in the office.
- C.Place two front-end protocol servers on the Internet. Configure these two servers to use Network Local Balancing (NLB).
- D.Place the LDAP on the Internet.
- E.Configure the LDAP server to have two separate ports: one for each protocol Server.

Answer:C

19.What should you do to maximize security on the Server that is used by company employees for remote e-mail access?

- A.Use the Internet Authentication Service.
- B.Use digital certificates on the client computers.
- C.Place the front-end Server outside the Internet firewall.
- D.Require SSL connections on the front-end Server.
- E.Use IPSec to encrypt traffic on port 25.

Answer:D

20. Based on business priorities, when should you implement your Exchange 2000 server administrative group design?

- A. Before upgrading the Portland office.
- B. After Upgrading the Portland office, and before upgrading the KANSAS City office.
- C. After upgrading the Los Angeles office, and before upgrading the Kansas city office.
- D. After upgrading the KANSAS city office.

Answer: B