

PASSTCERT

QUESTION & ANSWER

Higher Quality
Better Service!

We offer free update service for one year
[HTTP://WWW.PASSTCERT.COM](http://www.passtcert.com)

Exam : 070-285

Title : Designing
Microsoft® Exchange
Server 2003 Organization

Version : Demo

1. You need to design a storage strategy that meets all business and technical requirements.

What should you do?

- A. Create a storage group for each office. Within each storage group, create a single database.
- B. Create a storage group for each region. Within each storage group, create a single database.
- C. Create a storage group for each region. Within each storage group, create separate databases for each office in that region.
- D. Create a single storage group. Within that storage group, create a separate database for each office.

Answer: C

2. You need to design an administrative model that meets all business and technical requirements.

What should you do?

- A. Place the mailboxes for each region on a separate server. Create an administrative group for each region.

Assign each regional technician Exchange Full Administrator permission over that region's administrative groups. Assign the main office IT staff Exchange Full Administrator permission over each administrative group.

- B. Place the mailboxes for each region on a separate server. Create an administrative group for each region.

Assign each regional technician Exchange Full Administrator permission over all administrative groups.

Assign the main office IT staff Exchange Full Administrator permission over each administrative group.

- C. Place the mailboxes from multiple regions on each server. Create an administrative group for each server.

Assign each regional technician Exchange Full Administrator permission over the administrative groups that contain servers that hold mailboxes for that region. Assign the main office IT staff Exchange Full Administrator permission over each administrative group.

- D. Place the mailboxes from multiple regions on each server. Create a single administrative group for all servers. Assign each regional technician and the main office IT Staff Exchange Full Administrator permission over the administrative group.

Answer: A

3. You need to design a strategy for managing the messages that are sent to the customer service mailboxes.

What should you do?

- A. Create a separate storage group and database to contain the customer service mailboxes.
Enable circular logging for this storage group.
- B. Create a separate storage group and database to contain the customer service mailboxes.
Set the deleted item retention period for this database to zero.
- C. Place the customer service mailboxes on a new mailbox store in the storage group that contains the main office user mailboxes. Enable circular logging for this storage group.
- D. Place the customer service mailboxes on a new mailbox store in the storage group that contains the branch office user mailboxes. Set the deleted item retention period for this database to zero.

Answer: A

4. You need to design the Exchange 2003 server configuration for remote e-mail access.

What should you do?

- A. Configure the front-end servers in each branch office to be members of a new Active Directory site.
- B. Configure the back-end servers to have server encryption certificates issued by a commercial certification authority (CA).
- C. Configure two back-end servers to be members of a Network Load Balancing cluster.
Configure Network Load Balancing for inbound RPC connections.
- D. Configure multiple front-end servers in each branch office to be members of a Network Load Balancing cluster. Configure Network Load Balancing for inbound HTTPS connections.

Answer: D

5. You need to design the deployment of antivirus software. What should you do?

- A. Install the antivirus software on each mailbox storage server.
- B. Install the antivirus software on each Outlook Web Access server.
- C. Install the antivirus software on one Outlook Web Access server at each office.
- D. Install the antivirus software on a back-end server that contains no mailboxes.

Answer: A

6. You need to design access to e-mail by Internet users. What should you do?

- A. Configure front-end servers to use HTTP to communicate with back-end servers.
- B. Configure the internal firewall to allow IPSec traffic between front-end and back-end Exchange servers.
- C. Require all users to encrypt all outbound e-mail messages.
- D. Issue digital certificates to all remote users. Require the certificates to be used when authenticating to Outlook Web Access.

Answer: B

7. Overview

Fourth Coffee is an international company that operates 24 hours a day and supplies coffee to

retailers around the world.

Physical Locations

The company has a main office and seven branch offices. The main office is located in Sydney. The branch offices are located in Auckland, San Paulo, Johannesburg, London, Helsinki, Seattle, New York.

Planned Changes

The company plans to upgrade from Exchange Server 5.5 to Exchange Server 2003.

Administrative Structure

The current Exchange Server 5.5 environment contains eight sites. Each office is configured as a separate site.

A centralized administrative model is used in the organization. All the Exchange administration and configuration take place at the main office.

Exchange administrators are responsible for the creation of mailboxes and configuration of the Exchange servers. The Exchange administrators do not have Domain Admin rights.

Domain administrators are responsible for daily administration and networking tasks.

Messaging Infrastructure

The name of the existing Exchange Server 5.5 organization is Fourth Coffee. The organization contains an SMTP address of @fourthcoffee.com.

The Exchange Server 5.5 routing topology was created by using X.400 connectors.

The main office has two dedicated Internet Mail Connectors that are responsible for sending and receiving e-mail messages from the Internet.

E-Mail Clients

Fourth Coffee uses Microsoft Outlook 2002 as its e-mail client.

The network currently supports MAPI, HTTP, HTTPS, and SMTP.

Directory Services

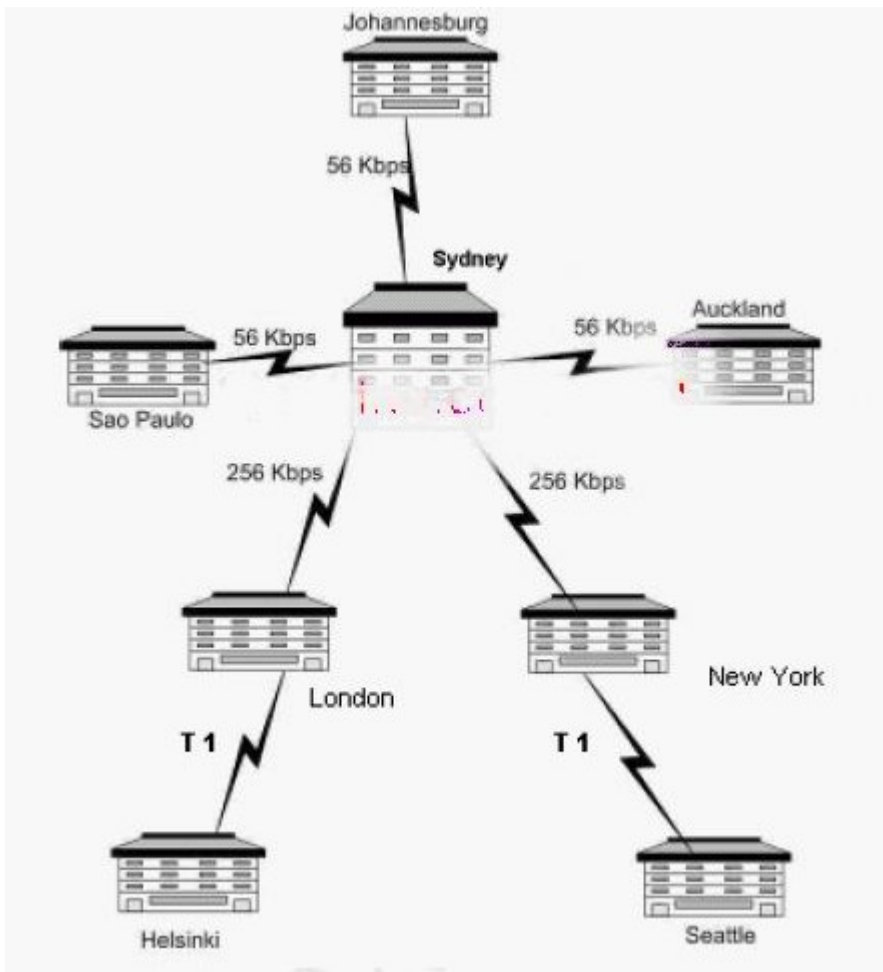
Fourth Coffee is in the process of migrating to a single-domain forest named fourthcoffee.com.

The functional level of the domain and the forest is Windows Server 2003.

On the network, domain controllers are named DC1, DC2, etc., and global catalog servers are named GC1, GC2, etc.

Network Infrastructure

The existing network infrastructure is shown in the following diagram.



Security

The company requires that all users use Outlook Web Access or Microsoft Outlook 2003.

The company requires remote users to use encryption for remote connections.

Interviews

Chief Executive Officer: Sales personnel need to be able to read and send e-mail messages and schedule meetings while they are offline. E-mail messages and meeting requests should be sent automatically when the sales personnel connect to the Exchange servers from remote locations.

Chief Information Officer: Due to competitive pressures, we want to change the name of our Exchange organization but still keep our SMTP namespace. There is no budget for additional migration tools or external consultants. During the migration process, managers must still be able to schedule meetings and view the calendars of other managers.

Exchange Administrator: As part of the design and migration strategy, we want to consolidate the Exchange Server 5.5 servers. We want to be able to migrate mailbox directory information and populate Active Directory with account information.

End User: The public folder server is constantly unavailable. We need to be able to access public folders on a regular basis.

Messaging Infrastructure

Two connectors will be used to send and receive e-mail messages from the Internet. The company wants all inbound Internet e-mail messages to flow through EX1. If EX1 is not available, the company wants the e-mail messages to flow through EX3. EX1 and EX3 are located at the main office.

The new environment must coexist with the existing Exchange Server 5.5 environment, including the public folders.

The company plans to install and configure Exchange Server 2003 on new computers.

All SMTP from the Internet for the fourthcoffee.com namespace must be delivered to the Exchange Server 2003 computer.

The company plans to use Microsoft Internet Security and Acceleration (ISA) Server, Enterprise Edition, to create a perimeter network. The server will be named ISA1.

Supporting Infrastructure

Users need to be able to access the online global address list in the case of a failure of a WAN connection or single server.

You must use the minimum number of global catalogs possible to ensure logon and global address list functionality without excessively burdening the network.

You also need to minimize the number of DNS lookups for mail deliver and ensure that DNS lookups take place on only the servers in the main office.

Shared resources in the existing Microsoft Windows NT domain must be accessible by users in both the new Active Directory domain and the Windows NT domain.

E-mail Client Infrastructure

The e-mail clients and desktop computers will be upgraded to use Outlook 2003 exclusively.

Client computers that connect to the Outlook Web Access servers use Internet Explorer 5.5 with SP2 or a more recent version.

The company wants MAPI, HTTPS, and SMTP to be the only protocols that are supported.

8. You need to design a migration path for migrating user accounts and mailboxes to the new environment.

Which two actions should you perform? (Each correct answer presents part of the solution.

Choose two)

- A. Use the Migration Wizard to create and migrate mailboxes to Exchange Server 2003.
- B. Use Active Directory Users and Computers to move user accounts and mailboxes to the new environment.
- C. Use Microsoft Identity Integration Server (MIIS) to synchronize user accounts with the new environment.

D. Use the Active Directory Migration Tool (ADMT) to clone user accounts in Active Directory.

E. Use ClonePrincipal to migrate user accounts to the new environment.

Answer: AD

9. You need to design a migration strategy to migrate public folders from the existing Exchange Server 5.5 environment to the Exchange Server 2003 environment.

What should you do?

A. Install and configure the Exchange utility. Use the utility to migrate and import all calendar information into each new mailbox.

B. Install and configure the InterOrg Replication Utility. Use the utility to migrate public folder information from Exchange Server 5.5 to Exchange Server 2003.

C. Install and configure a public folder connection agreement. Use this agreement to migrate the public folder information from Exchange Server 5.5 to Exchange Server 2003.

D. Run the pfmigrate command to migrate the public folder information from Exchange Server 5.5 to Exchange Server 2003.

Answer: B

10. You need to ensure that SMTP e-mail messages can be delivered when the messages are sent to addresses that end with @fourthcoffee.com and are intended for the Exchange Server 5.5 environment.

Which three courses of action should you perform? (Each correct answer presents part of the solution. Choose three)

A. Create mail-enabled contacts in the fourthcoffee.com domain for each Exchange Server 5.5 recipient.

Establish the e-mail address to have an address that ends with @oldmail.fourthcoffee.com.

B. Create mail-enabled contacts in the fourthcoffee.com domain for each Exchange Server 5.5 recipient.

Establish the e-mail address to have an address that ends with @fourthcoffee.com

C. Configure each Exchange Server 5.5 recipient to have an address e-mail address that ends with @oldmail.fourthcoffee.com. Set the @oldmail.fourthcoffee.com address to be the default reply address.

D. Configure each Exchange Server 5.5 recipient to have an additional e-mail address that ends with @oldmail.fourthcoffee.com. Set the @fourthcoffee.com address to be the default reply address.

E. Configure each Exchange Server 5.5 recipient to use a single SMTP address that ends with @oldmail.fourthcoffee.com.

F. Configure an SMTP connector between the Exchange Server 2003 routing group at the Sydney office and the Exchange Server 5.5 site at the Sydney office.

Configure the connector namespace to be oldmail.fourthcoffee.com.

G. Configure an SMTP connector between the Exchange Server 2003 routing group at the Sydney office and the Exchange Server 5.5 site at the Sydney office.

Configure the connector namespace to be fourthcoffee.com.

Answer: ADF