

PASSTCERT

QUESTION & ANSWER

Higher Quality
Better Service!

We offer free update service for one year
[HTTP://WWW.PASSTCERT.COM](http://www.passtcert.com)

Exam : 070-621

**Title : Pro:Upgrading Your MCDST
Cert to MCITP Enterprise
Support**

Version : DEMO

1.You add a particular e-mail address to the Blocked Senders list in the Microsoft Windows Mail application. You still receive messages from this e-mail address. You need to prevent the receipt of all e-mail messages from this e-mail address. What should you do?

- A.Configure the junk e-mail filtering setting to High.
- B.Remove the senders e-mail address from the Safe Senders list.
- C.Add the senders e-mail domain name to the Blocked Senders list.
- D.Configure the Microsoft Windows Mail application to delete suspected junk e-mail permanently.

Correct:B

2.Your computer has a TV tuner card installed. You install a wireless router and a Microsoft Windows Media Center Extender device. You need to access all the digital media on your computer from a different room in your house. Which two actions should you perform? (Each correct answer presents part of the solution. Choose two.)

- A.Identify the setup key from the Windows Media Extender device, and input the key on your Microsoft Windows Vista computer.
- B.Configure the Windows Media Center Extender device and your Microsoft Windows Vista computer to be on the same subnet.
- C.Configure the Windows Media Center Extender device and your Microsoft Windows Vista computer to be on different subnets.
- D.Enter the password for your Microsoft Windows Vista user account as the setup key for the Windows Media Center Extender device.

Correct:A B

3.You are attending a meeting on Microsoft Windows Meeting Space. At the same time, you attempt to join a second meeting also hosted on Windows Meeting space. The dialog box that allows you to join the second meeting fails to open. You need to join the second meeting. What should you do?

- A.Join the second meeting by using Microsoft Office Live Meeting.
- B.Enable the Windows Media Player Network Sharing Service Windows Firewall exception.
- C.Click the Leave meeting option in the first meeting, and then join the second meeting.
- D.Open Windows Meeting Space, create a new meeting, and specify a password for others to use when they join the meeting.

Correct:C

4.You need to configure Microsoft Windows Fax and Scan to send and receive faxes. What should you do?

- A.Create a new fax account.
- B.Configure the fax settings to require manual receipt of faxes.
- C.Configure the fax security settings to permit Send and Receive.
- D.Configure the Transmitting Subscriber ID (TSID) of the fax with the correct phone number.

Correct:A

5.Your portable computer has a Virtual Private Network (VPN) connection configured. You need to connect to the VPN. What should you do?

- A.Use the Mobile PC program.
- B.Use the Ease of Access program.
- C.Use the System and Maintenance program.
- D.Use the Network and Sharing Center program.

Correct:D

6.You share your portable computer with a co-worker. You use separate user accounts to log on. A wireless network is available to you and your co-worker. You need to prevent your co-worker from modifying your wireless network profile. What should you do?

- A.Disable the Connect even if the network is not broadcasting option.
- B.In the Network and Sharing Center window, click the Diagnose and repair option.
- C.Set the default wireless profile type to the Use all-users only profile (recommended) option. Recreate the wireless network.
- D.Set the default wireless profile type to the Use all-users and per-user profiles option. Recreate the wireless network by using the Save this network for me only option.

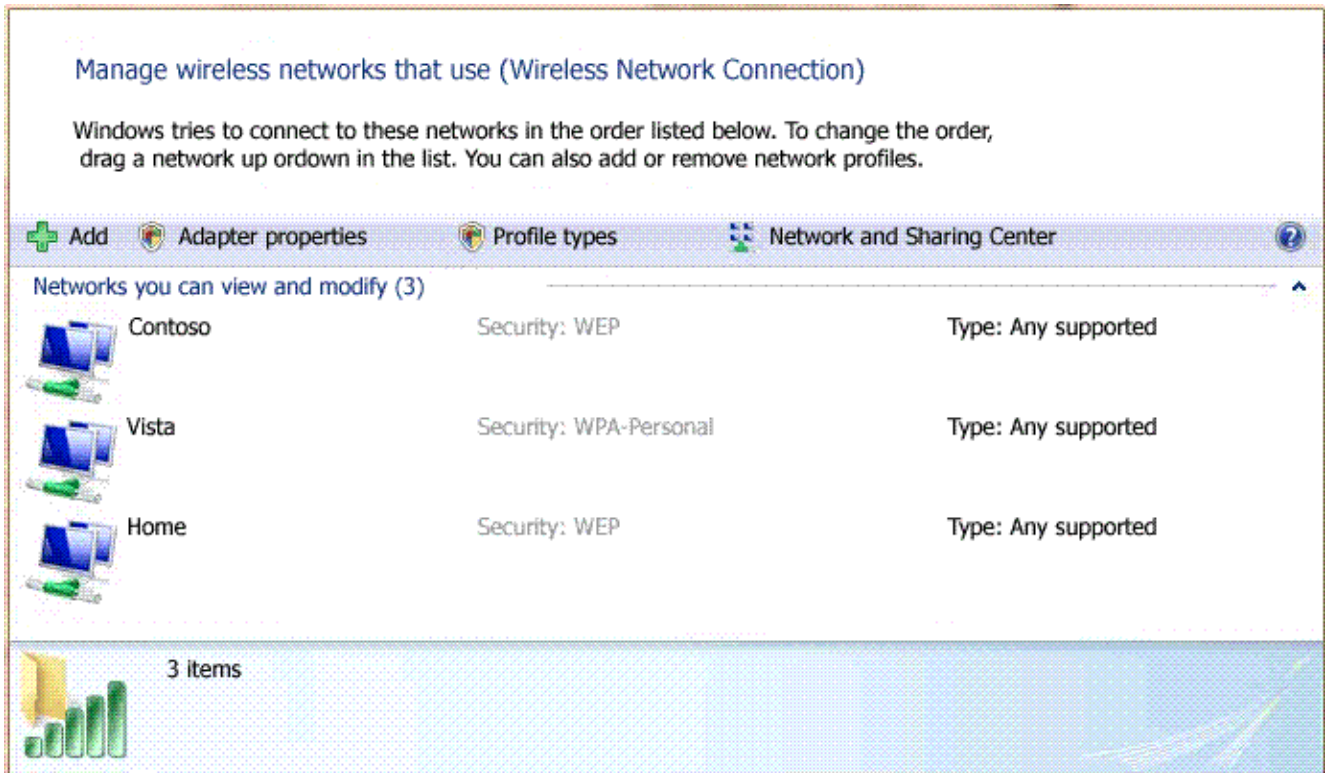
Correct:D

7.You install a wireless router and disable the Service Set Identifier (SSID) broadcast feature. You need to configure your computer to connect to the wireless network. What should you do?

- A.Click the Connect to a network link, right-click the appropriate network, and then click the Connect option.
- B.Click the View computers and devices link, right-click the wireless router, and then click the Enable option.
- C.Click the Set up a connection or network link, and then click the Set up a wireless Ad hoc network option.
- D.Click the Set up a connection or network link, and then click the Manually connect to a wireless network option.

Correct:D

8.You install a wireless router on your computer and set the Service Set Identifier (SSID) to Home. The Connect to a network list is as shown in the following exhibit. (Click the Exhibit button.) You need to ensure that you connect to your wireless network immediately whenever it is available. What should you do?



- A. Connect to the Home wireless network manually.
- B. Move the Home wireless network to the top of the list.
- C. Configure the external interface of the wireless router to have a dynamic IP address.
- D. Configure a static IP address that is appropriate for the internal network of the wireless router.

Correct: B

9. Your computer connects to both an ad hoc wireless network and a wired network. You need to allow other wireless clients to access the wired network. What should you do?

- A. Set the security type to the No authentication (Open) option.
- B. Configure the wired and wireless network adapters as a network bridge.
- C. Modify the wireless network profile type to the Use all-user profiles only (recommended) option.
- D. On each wireless client, set the Service Set Identifier (SSID) for a new wireless network to the name of your wired network adapter.

Correct: B

10. You set up Really Simple Syndication (RSS) subscription feeds on your computer. You need to view the RSS subscription feed in XML format. What should you do?

- A. Disable the Turn on feed reading view option.
- B. Enable the Always use Clear Type for HTML option.
- C. Configure the RSS feed to be sent to your e-mail client.
- D. Enable the Automatically download attached files option.

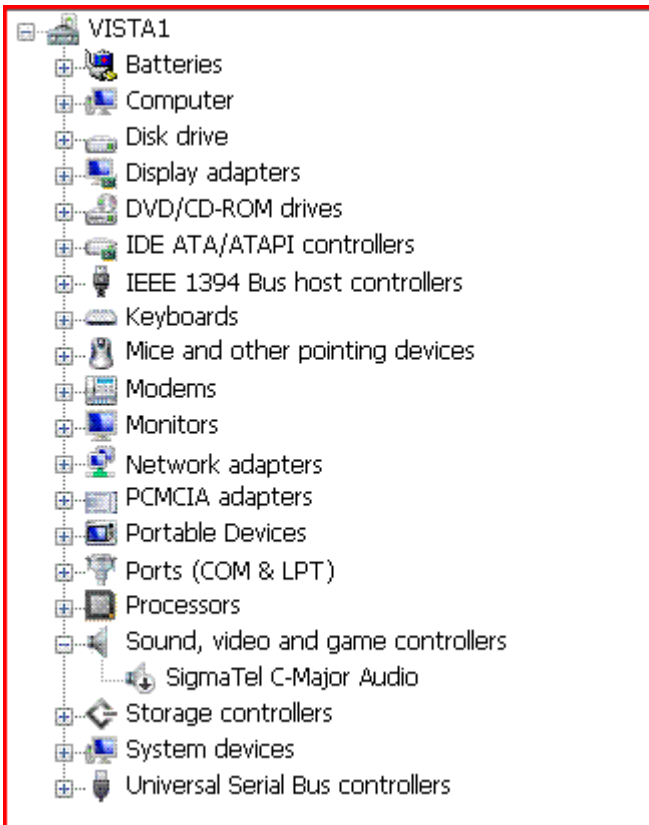
Correct: A

11. You configure Microsoft Internet Explorer 7 with a Really Simple Syndication (RSS) subscription to MSN Entertainment on your computer. Your RSS subscription Web page fails to show the information that the RSS feed Web page displays from MSN Entertainment. You need to ensure that Internet Explorer displays the current content from the RSS feed. What should you do?

- A.Enable the feed reading view in the RSS feed settings.
- B.Configure the RSS feed properties to use the minimum interval value.
- C.Configure the RSS feed properties to keep only the most recent 50 items.
- D.Configure the RSS feed properties to automatically download attached files.

Correct:B

12.Your computer fails to produce any audio output. The Device Manager management console is as shown in the following exhibit. (Click the Exhibit button.) You need to receive audio output from your computer. What should you do?



- A.Enable the audio hardware.
- B.Initiate a Microsoft Windows Update scan.
- C.Update the driver for the audio hardware.
- D.Download and run the latest installation program for the audio hardware from the manufacturer.

Correct:A

13.Your computer runs Microsoft Windows XP Professional. The computer has the following hardware configuration: 512 MB of RAM 1-GHz processor 60-GB hard disk 15 GB of free space 64-MB video adapter. You perform a clean install of Microsoft Windows Vista. You need to ensure that Microsoft Windows Aero Experience is supported. What should you do?

- A.Upgrade the memory to 1 GB of RAM.
- B.Upgrade the hard disk to 120 GB with 40 GB of free space.
- C.Install a video adapter that has 128 MB of RAM, support for Microsoft DirectX 9, and Microsoft Pixel Shader 2.0.
- D.Install a video adapter that has 128 MB of RAM, support for Microsoft Scalable Link Interface (SLI) and Microsoft Pixel Shader 2.0.

Correct:C

14.You implement Parental Controls game restrictions for your child on your computer. You select the TEEN rating game restriction. Your child is still able to run some inappropriate games. You need to prevent access to all inappropriate games. What should you do?

- A.Configure the Game Restrictions parental control to disallow games that are not rated.
- B.Configure the Game Restrictions parental control to block games that have intense violence.
- C.Configure Windows Defender to remove high alert items.
- D.Configure Microsoft Internet Explorer in Protected Mode.

Correct:A

15.You have two computers. One computer runs Microsoft Windows XP Media Center Edition. The other computer is joined to a domain and runs Microsoft Windows XP Professional. You need to upgrade both computers to Microsoft Windows Vista. You must achieve this goal while retaining the existing data, functionality, and applications. Which two actions should you perform? (Each correct answer presents a part of the solution. Choose two.)

- A.Upgrade the Windows XP Media Center Edition computer to Microsoft Windows Vista Business Edition.
- B.Upgrade the Windows XP Media Center Edition computer to Microsoft Windows Vista Home Premium Edition.
- C.Upgrade the Windows XP Professional computer to Microsoft Windows Vista Business Edition.
- D.Upgrade the Windows XP Professional computer to Microsoft Windows Vista Home Premium Edition.

Correct:B C

16.Your computer runs Microsoft Windows XP Professional. The computer also runs 20 third-party applications. You plan to upgrade your computer to Microsoft Windows Vista. The functionality of the existing 20 applications must be maintained even after you upgrade your computer. You need to ascertain whether the hardware and software on the Windows XP Professional computer will support the upgrade. What should you do?

- A.Run the mbsacli.exe command.
- B.Run the winnt32.exe /checkupgradeonly command.
- C.Run the Microsoft Windows Vista Upgrade Advisor application.
- D.Compare the Microsoft Windows XP Professional system hardware against the Microsoft Windows Vista Hardware Compatibility List (HCL).

Correct:C

17.You administer your companys network. All client computers run Microsoft Windows Vista. A standard user reports that they are unable to install an application. You need to install the application. What should you do?

- A.While the standard user is logged on, at the consent prompt, click Continue and install the application.
- B.While the standard user is logged on, at the credential prompt, provide administrative credentials.
- C.Create a .pwl file that stores administrative credentials. Double-click the installation file.
- D.Copy the contents of the CD-ROM to the local hard disk. Run the application installation from the local hard disk.

Correct:B

18.You perform a clean installation of Microsoft Windows Vista on the first partition. Then, you install Microsoft Windows XP Professional on the second partition of the same machine. You are able to log on to Windows XP Professional but do not have the option to boot to Windows Vista. You need to be able to dual boot the computer. What should you do?

- A.Run the bootcfg.exe application with the /fastdetect option.

- B.Perform a clean installation of Windows Vista on the first partition.
- C.Run the msconfig.exe application and change the order of the operating systems in the boot.ini file.
- D.Edit the boot.ini file. Add the following line: Multi(0)Disk(0)Rdisk(0)Partition(1)\Microsoft Windows

Correct:B

19.When you connect an external monitor to your portable computer, the same image appears on both monitors. You need to drag a window from one monitor to the other. What should you do?

- A.Change the display setting to extend the desktop.
- B.In the Microsoft Windows Mobility Center window, turn on the Presentation Settings feature.
- C.Configure the external monitor as the primary display and the built-in monitor as the secondary display.
- D.Change the secondary display resolution settings to make them equal to or less than the primary display resolution settings.

Correct:A

20.Your portable computer has a built-in secondary display on the lid. You need to display your e-mail messages, calendar, and contacts on the secondary display. What should you do?

- A.Configure the e-mail, calendar, and contacts gadgets to be displayed on Microsoft Windows Sidebar.
- B.Configure the e-mail, calendar, and contacts gadgets to be displayed on Microsoft Windows Sideshow.
- C.Configure desktop shortcuts to Microsoft Windows Mail, Microsoft Windows Calendar, and Microsoft Windows Contacts.
- D.Configure Quick Launch shortcuts to Microsoft Windows Mail, Microsoft Windows Calendar, and Microsoft Windows Contacts.

Correct:B