

# PASSTCERT

QUESTION & ANSWER

Higher Quality  
Better Service!

We offer free update service for one year  
[HTTP://WWW.PASSTCERT.COM](http://www.passtcert.com)

**Exam : 642-964**

**Title : Cisco Data Center  
Networking Infrastructure  
Solutions Support**

**Version : DEMO**

**1.What will be upgraded as a result of this command? upgrade ftp://ftppuser@10.1.2.3//upgrade/IPS-K9-r-1.1-a-5.1-1.pkg**

- A.recovery partition
- B.application partition
- C.both application and recovery partitions immediately
- D.both application and recovery partitions at the next scheduled automatic IDS update

**Correct:A**

**2.On a Cisco Catalyst 6500 Series Switch, how many physical links can be aggregated into an EtherChannel group?**

- A.4
- B.8
- C.16
- D.32

**Correct:B**

**3.How would you configure a NAM to monitor and report the most heavily viewed sections of a website?**

- A.Create a separate domain name or virtual server IP address for each section of the site. Add each domain name or IP address to the NAM application protocol directory.
- B.Enable regular-expression pattern matching. Define application protocol filters based on regular expressions that match the desired URLs.
- C.Enable URL monitoring. Define each desired URL as an application in the protocol directory.
- D.Use SPAN or VACLs to capture upper-layer protocol data from the web servers. Use a third-party application to parse the stored capture files.

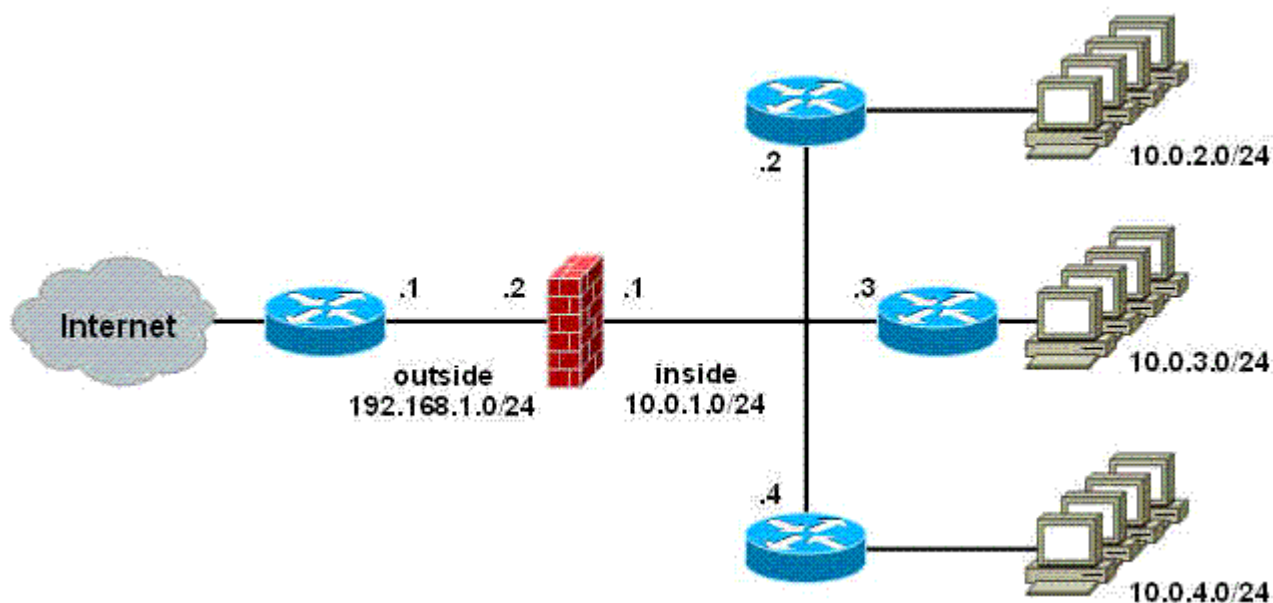
**Correct:C**

**4.How can you configure the NAM to view a list of all switches that are sending NDE packets?**

- A.Enter the command sh data-source nde.
- B.Configure Cisco Discovery Protocol to detect all switches on the network.
- C.Launch NetFlow Listening Mode from the Cisco Traffic Analyzer application.
- D.The NAM will automatically detect NDE broadcasts and add each switch to the NetFlow device table.

**Correct:C**

**5.Refer to the exhibit. Which FWSM command allows routing of TCP traffic from the Internet to network 10.0.3.0/24?**



- A.access-list inside permit tcp 192.168.1.0 255.255.255.0 10.0.3.0 255.255.255.0
- B.route inside 10.0.3.0 255.255.255.0 10.0.1.3
- C.route outside 10.0.3.0 255.255.255.0 10.0.1.3
- D.route inside 0 0 10.0.1.3

**Correct:B**

**6.Which command must be issued to activate the FWSM firewall context?**

- A.allocate-vlan
- B.config-url
- C.limit-resource
- D.map-interface

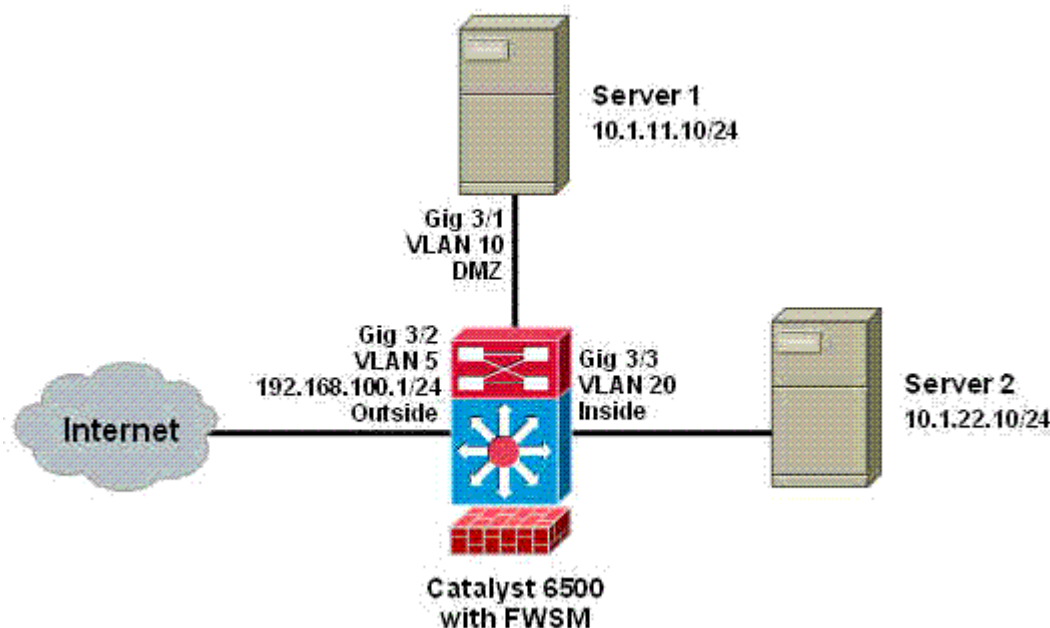
**Correct:B**

**7.The IDSM management-interface IP address can be configured from which prompt?**

- A.IDSM(config)#
- B.IDSM(config-hos-net)#
- C.IDSM(config-mgmt)#
- D.IDSM(config-if)#

**Correct:B**

**8.Refer to the exhibit. Which command would you use on the FWSM to provide a default route from Servers 1 and 2 to the Internet?**



- A.route inside 0 0 192.168.100.1
- B.route inside 10.1.0.0 255.255.0.0 192.168.1.1
- C.route outside 0 0 192.168.100.1
- D.route outside 10.1.0.0 255.255.0.0 192.168.1.1

**Correct:C**

**9.Which statement is correct regarding Layer 3 EtherChannels?**

- A.They are STP-aware.
- B.They cannot be automatically negotiated.
- C.Multiple EtherChannels are used between a pair of switches.
- D.Multiple EtherChannels between two switches create an STP loop.

**Correct:C**

**10.What is the effect of executing the command intrusion-detection module 5 management-port access-vlan 10 on an IDSM?**

- A.allows the IDSM to be managed by devices in VLAN 10
- B.configures the IDSM to monitor traffic from VLAN 10 in in-line mode
- C.allows the IDSM to perform blocking actions on devices in VLAN 10
- D.configures the IDSM to monitor traffic from VLAN 10 in promiscuous mode

**Correct:A**