

PASSTCERT

QUESTION & ANSWER

Higher Quality
Better Service!

We offer free update service for one year
[HTTP://WWW.PASSTCERT.COM](http://www.passtcert.com)

Exam : **922-102**

Title : Nortel Converged Office for
CS 1000 RIs. 5.x
Configuration

Version : Demo

1. During the installation of a new Nortel Converged Office solution you decide to perform packet captures while making some test calls. After some analysis of the packet capture, you notice that the dual-forking functionality is not working. Which is the correct Class of Service setting to enable twinning on a PCA Terminal Number (TN) in a Nortel Converged Office solution with OCS 2007?

- A. PCAG
- B. PGNA
- C. PRMA
- D. PCAM

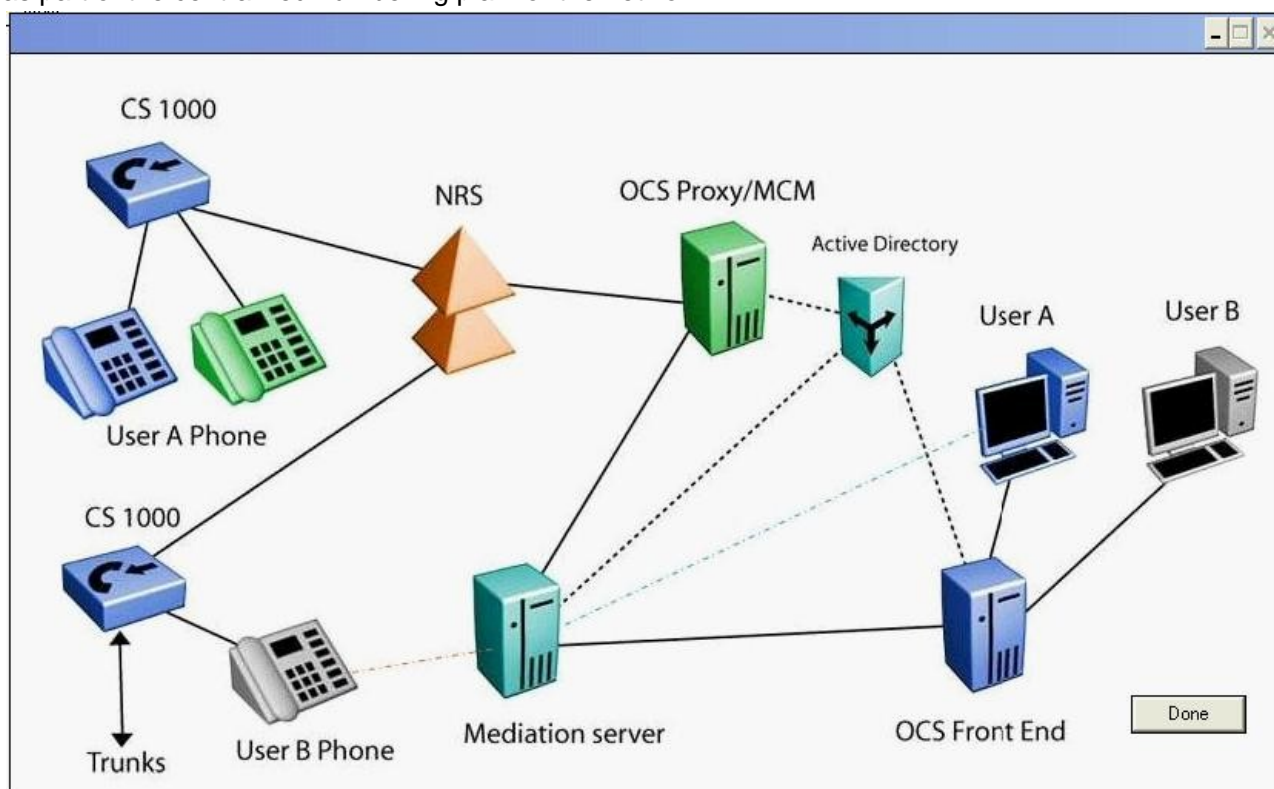
Answer: D

2. While at a customer site installing a Nortel Converged Office solution, you test the Remote Call Control and the Telephony Gateway feature with an IP telephone and Office Communicator 2007 client. You find that the Remote Call Control and Telephony Gateway and Services feature is not working. After troubleshooting you decide to review the basic requirements to deploy the solution. Which Communication Server 1000 software package provides the Remote Call Control Telephony Gateway and Services feature?

- A. Package 77
- B. Package 398
- C. Package 406
- D. Package 408

Answer: D

3. Click on the Task button. You have been asked to troubleshoot a Nortel Converged Office solution for a Communication Server (CS) 1000 RIs. 5.0 network. The customer requirements include a centralized numbering plan arrangement using SIP Trunking. Click on the component in the diagram that is required as part of the centralized numbering plan for the network.



Answer:

4.The Multimedia Communications Manager (MCM) RIs. 3.0 user account, on the Windows 2003 R2 server, requires privileges to perform administrative tasks on the local machine. Which local groups does the user account need to be in to properly manage the MCM RIs. 3.0 application? (Choose two.)

- A.local groups: Administrators Group
- B.local groups: RTC Local Group
- C.local groups: RTC Server Applications
- D.local groups: RTC Server Local Groups

Answer:C D

5.You are dispatched to a customer site to assist with troubleshooting a Remote Call Control problem on a Nortel Converged Office solution. You decide to turn on traces on the Communication Server (CS) 1000E side of the solution. Which component on the CS 1000E performs the SIP CTI TR/87 functionality?

- A.Network Routing Service
- B.Signaling Server
- C.Application Proxy server
- D.Network Connect Service

Answer:B