

PASSTCERT

QUESTION & ANSWER

Higher Quality
Better Service!

We offer free update service for one year
[HTTP://WWW.PASSTCERT.COM](http://www.passtcert.com)

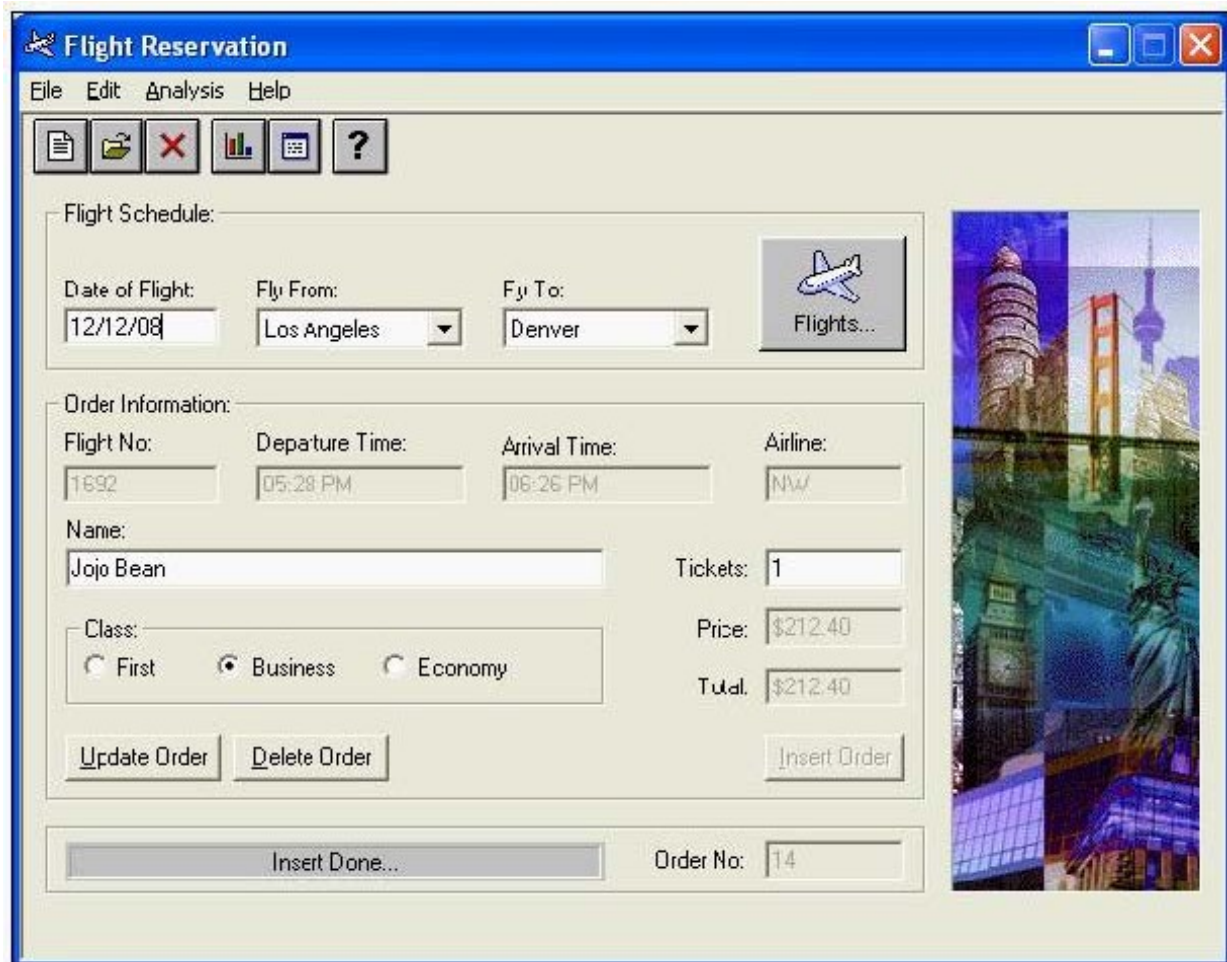
Exam : **HP0-M12**

Title : **HP WinRunner 9.2 Software**

Version : **Demo**

1. Click the Exhibit button.

You want to synchronize on the Status Bar with the text "Insert Done... ". Which TSL statement would meet this requirement?



- A. wait(10);
 - B. obj_check_gui("Insert Done...", "list1.ckl", "gui1", 16);
 - C. obj_wait_info("Insert Done...", "label", "Insert Done...", 10);
 - D. obj_check_info("Insert Done...", "label", "Insert Done...", 10);
- Answer: C

2. How do you specify a 15-second timeout in the global timeout settings?

- A. 15
- B. 150

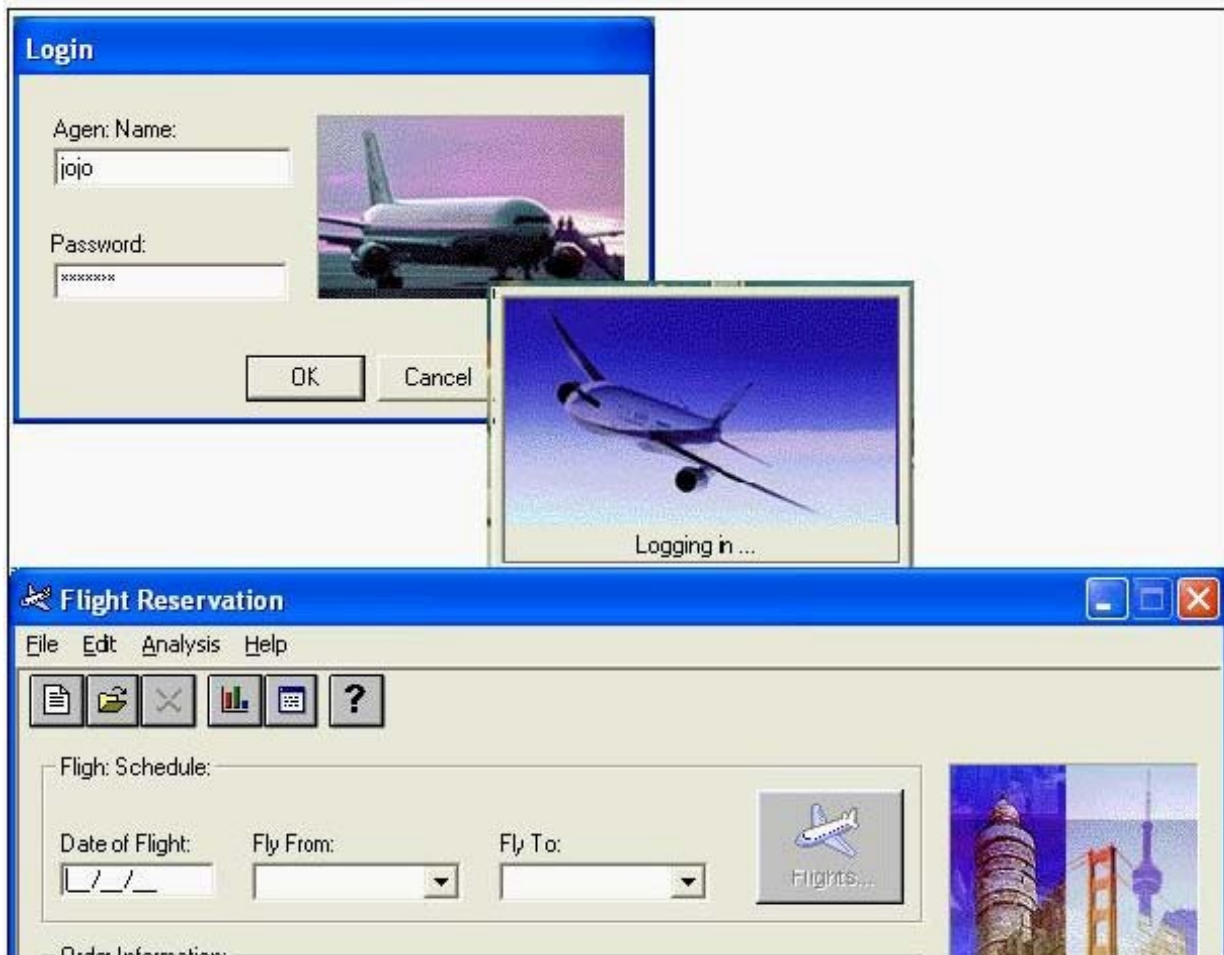
C. 1500

D. 15000

Answer: D

3. Click the Exhibit button.

Which method should you use to synchronize the application after logging in?



A. wait for a bitmap to refresh

B. wait for a window to appear

C. wait for an object state change

D. wait for a process screen to complete

Answer: B

4. You are testing a banking application. At 8 AM an employee logs in successfully and it takes about 5 seconds for the main menu window to appear. At 9 AM it takes approximately 15 seconds for the main menu window to appear after login. If you were to incorporate this time difference in a script, which

WinRunner feature would you use so that the script runs successfully despite the difference in time for the main menu window to appear?

- A. Verify
- B. Data drive
- C. Synchronize
- D. Parameterize

Answer: C

5. Which synchronization statement is automatically generated during recording?

- A. `win_activate("Flight Reservation");`
- B. `set_window ("Flight Reservation 10");`
- C. `obj_wait_bitmap("Flights","Img2",6,7,8,101,114);`
- D. `obj_wait_info("Insert Done...","label","Insert Done...",10);`

Answer: B

6. The process for building a functional WinRunner script goes through four steps. What are these steps? (Select four.)

- A. plan the test
- B. synchronize
- C. record steps
- D. parameterize
- E. add verification
- F. analyze results
- G. execute the test

Answer: BCEG

7. A test script contains both Context Sensitive and Analog recording. The script keeps failing on the window where the Analog recording is played back. Which function can you include in your script to ensure that windows and objects are in the same locations as when the test was recorded?

- A. win_move function
- B. GUI_load function
- C. invoke_app function
- D. set_window function

Answer:A

8. In which file does WinRunner store user actions on the application under test captured during recording?

- A. lock
- B. script
- C. chklist D. debug

Answer: B

9. During recording, WinRunner "listens" to the actions a user performs on the application (and to the response from the server) and creates a log of these steps. Which language does WinRunner use to create these steps in a script?

- A. C Language
- B. VBScript Language
- C. Test Script Language
- D. Virtual User Language

Answer: C

10. What is the default recording mode that WinRunner uses?

- A. Analog
- B. Low-level
- C. Standard / Default
- D. Context Sensitive

Answer: D

11. In a test, you have to record both in Context Sensitive and Analog modes. Which method should you use to switch recording from Analog back to Context Sensitive without capturing the mouse movements in the test script?

- A. Toolbar
- B. Softkey
- C. Menu command
- D. Right click (popup menu)

Answer: B

12. What does the function `move_locator_track()` represent?

- A. a mouse over
- B. a mouse click
- C. a keyboard entry
- D. a function key press

Answer:A

13. The test lead wants a copy of the WinRunner script you created. To provide him with a workable copy, which file or files do you need to supply? Assume that the name of the test is Test1A under which the following files and folders are included: lock, script, chklist, db, debug, exp, res1.

- A. Script.zip
- B. Test1A.zip
- C. Script, db, exp, res1 in a zip file
- D. Lock, script, chklist, and db in a zip file

Answer: B

14. What is referred to as a WinRunner script that is used to initialize the working environment, including `UI_load()` and `GUI_close_all()` statements before test scripts are run?

- A. Loader script
- B. Startup script
- C. Function Library
- D. Function Generator

Answer: B

15. Upon invoking WinRunner, which feature lists the types of applications you can test?

- A. Add-In Manager
- B. RapidTest Wizard
- C. DataTable Wizard
- D. Recovery Scenario

Answer:A

16. A test run fails because of an unrecognized object. You want to compare the actual object properties to the properties stored in the GUI Map file. Which WinRunner feature compares the actual object properties versus the properties in the GUI Map and provides a possible reason for the error?

- A. GUI Spy
- B. Data Driver Wizard
- C. Run Wizard
- D. Virtual Object Wizard
- E. RapidTest Script Wizard

Answer: C

17. Click the Exhibit button.

The application under test has a new Login window. The objects need to be added to the GUI Map file. What is the best way to add these items in the GUI Map file?



- A. use the GUI Map Wizard
- B. use the Learn feature to learn each button

C. use the Add feature to add each button separately

D. use the Learn feature to learn all objects in the Login window

Answer: D

18. How does WinRunner set up the GUI Map file for a new test?

A. WinRunner automatically executes a GUI_load statement.

B. WinRunner automatically loads the last opened GUI Map file.

C. WinRunner automatically creates a new GUI Map file for the test.

D. WinRunner automatically loads a shared GUI Map file it recognizes.

Answer: C

19. If you want to save your recovery function, where is the best location to save the recovery for every test in your project?

A. Paste the recovery function in each test.

B. Add the recovery function in the startup script.

C. Add the recovery function in the function generator.

D. The recovery manager saves its own recovery function.

Answer: B

20. Which main components must be present in a simple and compound recovery scenario? (Select two.)

A. an event

B. an exit function

C. unknown object

D. recovery operation

E. post-recovery operation

Answer:AD