

PASSTCERT

QUESTION & ANSWER

Higher Quality
Better Service!

We offer free update service for one year
[HTTP://WWW.PASSTCERT.COM](http://www.passtcert.com)

Exam : IBMSPSSMPRO

**Title : IBM SPSS Modeler
Professional Certification**

Version : DEMO

1.Which key items must be identified before a data mining project is started? (Select all that apply)

- A.A business problem or question
- B.Data quality problem
- C.Available data
- D.Available expertise on the data and business

Answer: B

2.Given the following Output Table to create a select node which includes vehicles from both groups A and B, click on A and on B (as shown) and select from the menu.?

| | Policyholder age | Vehicle group | Vehicle age | Average cost of claims | Number of claims |
|----|------------------|---------------|-------------|------------------------|------------------|
| 1 | 17-20 | A | 0-3 | 259 | 8 |
| 2 | 17-20 | A | 4-7 | 282 | 8 |
| 3 | 17-20 | A | 8-9 | 133 | 4 |
| 4 | 17-20 | A | 10+ | 160 | 1 |
| 5 | 17-20 | B | 0-3 | 272 | 10 |
| 6 | 17-20 | B | 4-7 | 249 | 26 |
| 7 | 17-20 | B | 8-9 | 280 | 1 |
| 8 | 17-20 | B | 10+ | 11 | 1 |
| 9 | 17-20 | C | 0-3 | 199 | 9 |
| 10 | 17-20 | C | 4-7 | 288 | 13 |
| 11 | 17-20 | C | 8-9 | 179 | 1 |
| 12 | 17-20 | C | 10+ | 3005 | 0 |
| 13 | 17-20 | D | 0-3 | 763 | 3 |
| 14 | 17-20 | D | 4-7 | 880 | 2 |
| 15 | 17-20 | D | 8-9 | 3005 | 0 |
| 16 | 17-20 | D | 10+ | 3005 | 0 |
| 17 | 21-24 | A | 0-3 | 302 | 10 |
| 18 | 21-24 | A | 4-7 | 194 | 31 |
| 19 | 21-24 | A | 8-9 | 135 | 10 |
| 20 | 21-24 | A | 10+ | 105 | 4 |

- A.Generate ...- Select Node"Or")
- B.Generate ...- Select Node"And")

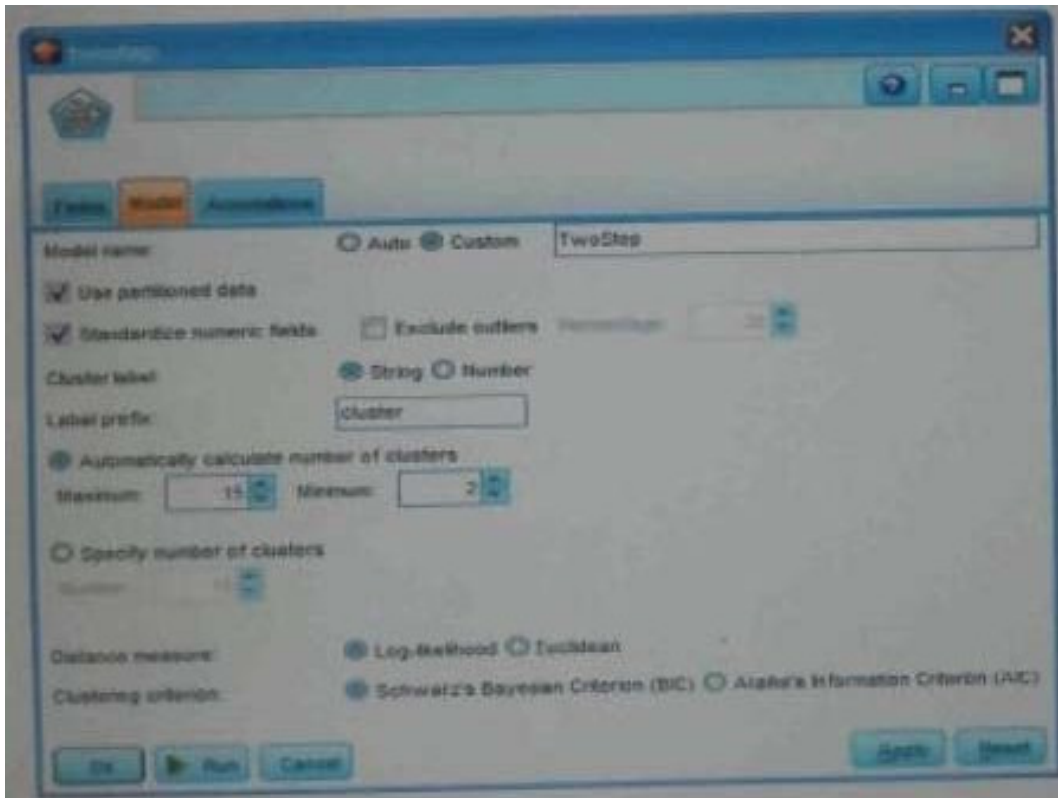
Answer: B

3.Which nodes are best suited for revealing relationship between categorical (nominal, ordinal) fields? (Select all that apply)

- A.Means node
- B.Matrix node
- C.Distribution node
- D.Table node

Answer: A,C

4.In two step node shown below, what does standardize numeric fields mean?



- A. Eliminate outliers to improve results.
- B. Transform the numeric fields to a scale with a mean of zero and variance of one.
- C. Limit the number of created clusters.
- D. Use only the numeric fields scale.

Answer: B

5. Which statement is correct regarding the sample node dialogue shown below?



- A. It will select every 60th record from the data.
- B. It will randomly select exactly 60% of all the record.
- C. It will select approximately 60% of the records. This is, each record will have a 60% probability of being selected.
- D. It will always draw the same 60% of records each time this sample node is run.

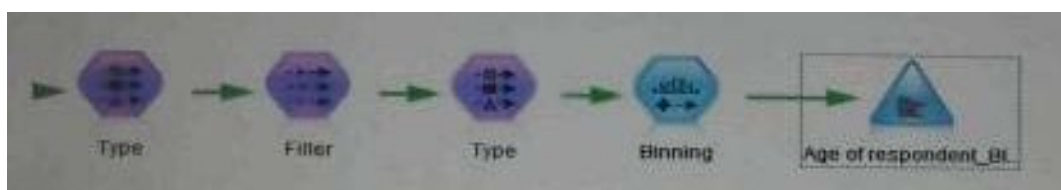
Answer: C

6. Which statements are true of the Feature Selection node? (Select all that apply)

- A. Input fields can be selected on the basis of importance.
- B. The Target fields can be either categorical or continuous measurement.
- C. The Input fields can only be continuous measurement.
- D. When a target field is not specified then it will create a generalized output.

Answer: A,B

7. What is the reason that the three nodes in the following figure have been colored purple?



- A. The purple nodes were pushed back to the database.
- B. IBM SPSS Modeler is running out of memory.

- C.The purple nodes will be executed later.
- D.There are multiple type nodes in a row.

Answer: A

8.On the PCA/Factor node when doing a Principle Component analysis without rotation, the values reported on the Component Matrix represents the correlation between each field and factor.

- A.True
- B.False

Answer: B

9.As a default, the Evaluation node provides a graph of the first category of your target field.To change the category, you need to modify which sector?



- A.User defined hit
- B.User defined score
- C.Include business rule
- D.Export results to file

Answer: A

10.Which Model nodes can have a categorical target field? (Select all that apply)

- A.Discriminant node
- B.Linear node
- C.Neural Net node
- D.C & R Tree node

Answer: A,B