

PASSTCERT

QUESTION & ANSWER

Higher Quality
Better Service!

We offer free update service for one year
[HTTP://WWW.PASSTCERT.COM](http://www.passtcert.com)

Exam : **TB0-105**

Title : Tibco starware process
definer i 10 exam

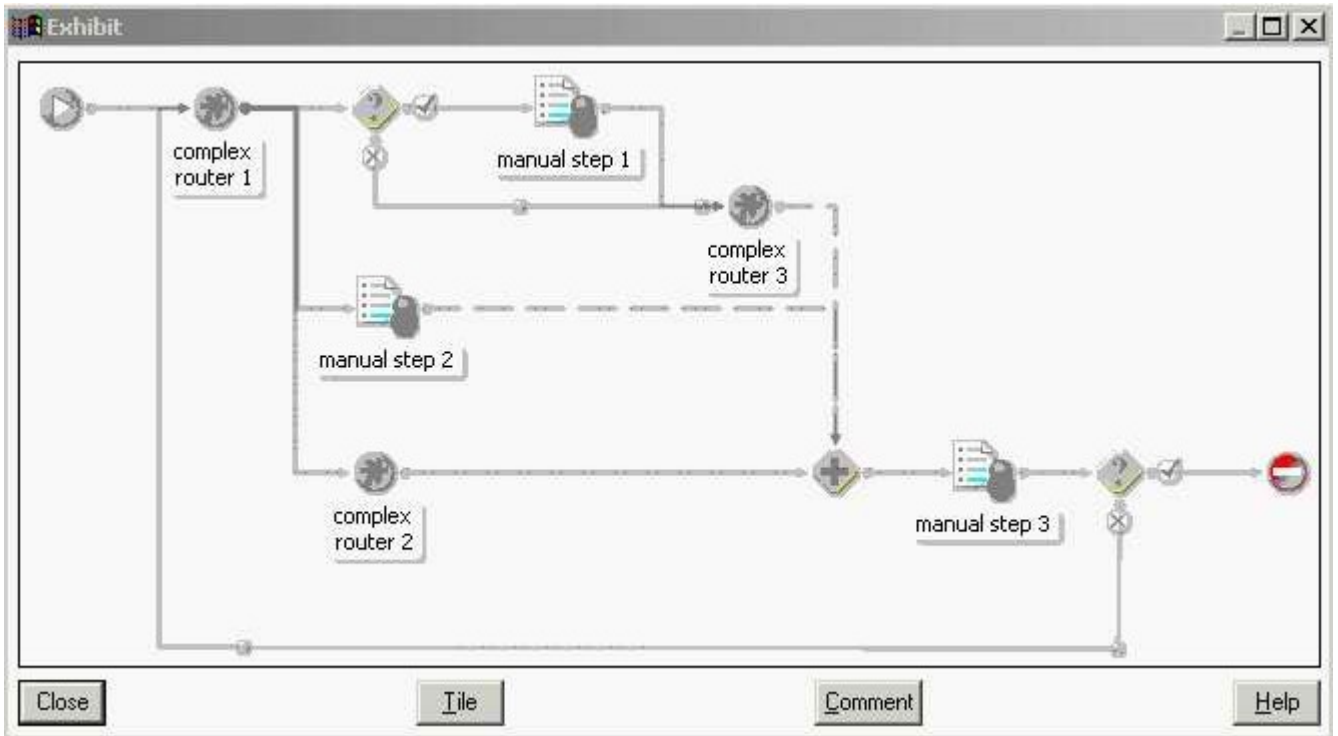
Version : DEMO

1. Providing all individual array indexes are set to SW_NA, which statement can be used to display the first element of all array fields marked on a form?

- A. SW_ALL_IDX:=0
- B. SW_GEN_IDX:=0
- C. SW_IDX_ALL:=0
- D. SW_RESET_IDX:=0

Answer: B

2. Click the Exhibit button. The process shown in the exhibit is a main process. It contains no scripts. There are no external applications that can interrupt it and it has been Released. A new case is started. The condition just before "manual step 1" has evaluated to False, and a workitem has been sent out for "manual step 2." What might happen next?



- A. Because both the True and False paths are connected to "complex router 3," the case will never be progressed.
- B. When "manual step 2" is released, the iProcess engine will move the case on to "manual step 3." If "manual step 3" is never released, the case will never move on.
- C. Because "complex router 1" has been processed via the False path, the iProcess engine will decide that the WAIT is completed and will send out "manual step 3" without waiting for "manual step 2" to be released.
- D. Because there are three paths above the WAIT (the True and False paths from the condition, and the path from "manual step 2"), the iProcess engine will wait for all three paths to complete and the case will

never move on.

Answer: B

3. Which two methods trigger an Event? (Choose two.)

- A. dynamic escalation on the Event step
- B. expiry of a deadline defined on the Event step
- C. a Withdraw Connection from a preceding step
- D. using the swutil utility from the client or server

Answer: BD

4. Which function is used to output a custom audit trail entry?

- A. AUDIT
- B. CAUDIT
- C. AUDITUSR
- D. CUSTAUDIT
- E. AUDITENTRY

Answer: D

5. Which four are valid in scripts? (Choose four.)

- A. loops
- B. CDQPs
- C. graphics
- D. comments
- E. print statements
- F. data expressions
- G. conditional expressions

Answer: ADFG

6. The business requirement is that a case should reach a specific point then wait until a gateway to the rest of the process is "unlocked." It is not specified whether it needs to be visible in a workqueue or not, but there will be a large number of cases to be "unlocked" at the same time. The date/time when the unlock will be triggered is not known when the case reaches this pause state, as it depends on external factors. Without taking efficiency or performance into account, which three methods provide a full solution? (Choose three.)

- A. use ServerRun or ServerExec to keep checking for the gateway to be opened; when it is opened, release the workitem
- B. use a non-delayed release EAI step to check whether the gateway has been unlocked when the case reaches this pause point

- C. use WinRun to keep checking for the gateway to be opened; when it is opened, release the workitem so that the case continues
- D. send the workitem to a workqueue and when the unlock event occurs, run a broker to release all relevant items in the workqueue
- E. use a delayed release EAI step to pass control to an external system, and wait for the external system to reply to the EAI step to release the case
- F. send the workitem to an Event step, notify an external system / database of the identity of the waiting case, and wait for the external system to trigger the event

Answer: DEF

7. Which three statements are true about ABOX files? (Choose three.)

- A. They are text files.
- B. They are always called ABOX.
- C. They can be used to pass data into and out of Staffware.
- D. They can be used to pass data into Staffware, but not out.
- E. Each line contains a field name and value, separated by a comma.
- F. All the field names are on one line, with all the values on the following line.

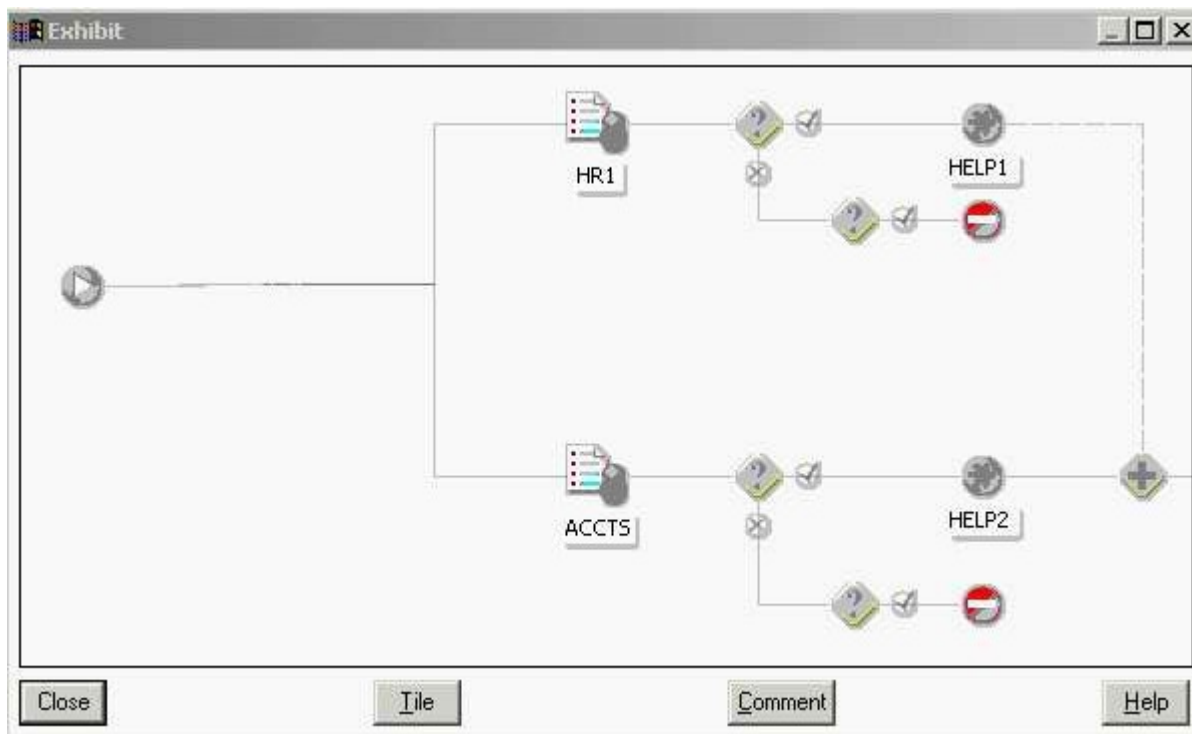
Answer: ACE

8. Which three statements are true about manual Case Starts? (Choose three.)

- A. Cases can only be started on procedures that are Released or Unreleased.
- B. Cases can only be started on procedures that are Released, Unreleased or Model.
- C. Only the owner and system administrator can start cases of Unreleased procedures.
- D. Cases can be started on procedures that are Released, Unreleased, Model or Withdrawn.
- E. Any user can start cases of Released procedures unless prevented by Procedure Access Control.
- F. Any user can start cases of Withdrawn Procedures unless prevented by Procedure Access Control.

Answer: BCE

9. Click the Exhibit button. Given the information shown in the exhibit, which two statements are true? (Choose two.)



- A. You cannot connect two steps to a Start object.
- B. HR1 will be processed after ACCTS as steps are delivered in alphabetical order.
- C. A condition should be connected to the Start object with HR1 and ACCTS being the True/False branches.
- D. The Stop objects can be removed as they do not provide any functionality in this section of the process flow.
- E. A Complex Router should be positioned after the Start object and subsequently connected to the HR1 and ACCTS steps.

Answer: AE

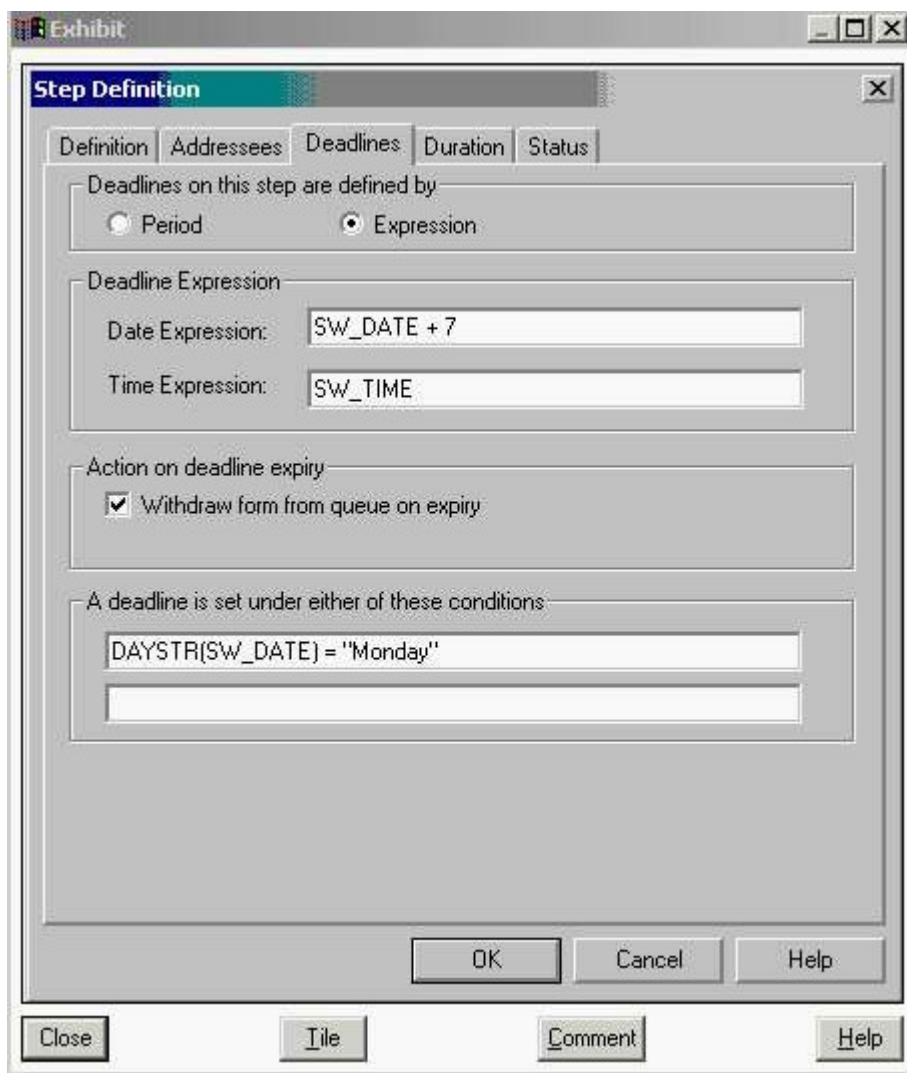
10. The project has a main procedure with a status of Released. This main procedure calls one sub-procedure within it that has a status of Unreleased. No other versions of the sub-procedure exist and precedence is set as default. What happens when this procedure is run?

- A. The main procedure will inherit the status from any sub-procedures it calls and all workitems will be delivered to test queues.
- B. When a call is made from the main procedure to the sub-procedure, the sub-procedure workitems will be delivered to test queues.
- C. When a call is made from the main procedure to the sub-procedure, the sub-procedure workitems will be delivered to Undelivered Work Items.
- D. When a call is made from the main procedure to the sub-procedure, the sub-procedure will inherit the main procedure's status and all

workitems will be delivered to live queues.

Answer: B

11. Click the Exhibit button. Given the following: SW_DATE = 01/02/2005 {date format=dd/mm/yyyy}
SW_TIME = 09:00 The day of the week is a Tuesday. The "Use Working Days" flag is not set. To what will the deadline be set?



- A. Not Set
- B. 01/09/2005 09:00:00
- C. 08/02/2005 09:00:00
- D. 01/02/2012 09:00:00

Answer: A

12. Which three are valid field definitions? (Choose three.)

- A. Text
- B. Float
- C. Date

- D. Memo
- E. Integer
- F. DateTime

Answer: ACD

13. Which two are valid system fields? (Choose two.)

- A. SW_STARTER
- B. SW_CASEREF
- C. SW_CASEDESCRIPTION
- D. SW_QUEUE_<QUEUENAME>

Answer: AB

14. What are two valid uses of Field commands? (Choose two.)

- A. to set the tab order of a field
- B. to convert the user input on a text field to uppercase
- C. to display a single character text field as a radio button
- D. to set a deadline for the current step, based on a field data value
- E. to run a script to generate a case reference, based on the concatenation of different field types and values

Answer: BE

15. A procedure needs to integrate to a third-party system via a Messaging solution but also needs the ability to manually perform the integration as a fallback. Which statement is true?

- A. Event steps are best used in this situation because events can pass data out to an external interface and receive data back via manual intervention.
- B. Brokers are best used in this situation because they integrate seamlessly to a Messaging solution and process workitems delivered to a workqueue.
- C. EAI steps are best used in this situation because they are truly transactional in relation to the iProcess Server and integrate seamlessly to a Messaging solution.
- D. EAI steps are best used in this situation because they are truly transactional in relation to the business process and they allow manual intervention because they are delivered to a user queue before processing.

Answer: B

16. In a process, a sequence of EAI steps exists, forming a single transaction. It is now necessary to deliver a standard step in the middle of the sequence. Which two statements are true? (Choose two.)

- A. The step can be used to help control where the transaction boundary is.
- B. Inserting a standard step in this way does not affect the transaction boundary.

- C. Once EAI step sequences are created this way, it is not possible to break them up.
- D. Placing steps this way will make the following EAI step perform less efficiently.
- E. The standard step can be used to display debug information about the preceding EAI steps as to whether they performed as expected.

Answer: AE

17. Which four steps are needed to enable a Dynamic sub-procedure to be tested? (Choose four.)

- A. release the sub-procedure
- B. release the parent procedure
- C. create a sub-procedure parameter template
- D. release the sub-procedure parameter template
- E. add a Dynamic sub-procedure call to the parent procedure
- F. define array field(s) in the main procedure to hold the name(s) of the sub-procedure(s)
- G. define array fields in the sub-procedure to hold data to be passed to the parent procedure

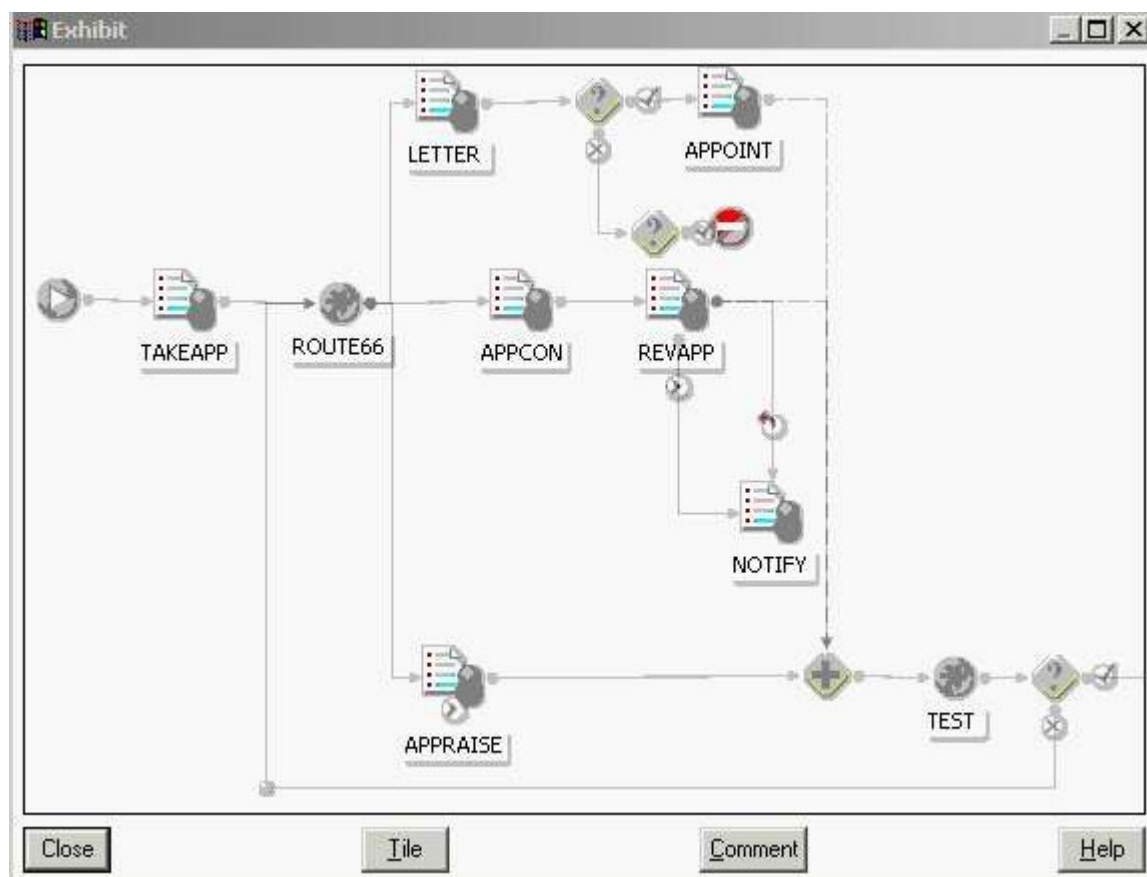
Answer: CDEF

18. When should you use a sub-procedure? (Choose five.)

- A. when you need more than fifty steps in a procedure
- B. when your procedure becomes too large to manage
- C. when you have procedures that carry out identical tasks
- D. when you are using an external application that controls which processes need to be run via a Graft step
- E. when you need to call a dynamic number of sub-procedures when the case is run depending on case data
- F. when you have a number of procedure administrators that need to work on parts of the process independently

Answer: BCDEF

19. Click the Exhibit button. On the first pass, all steps are processed successfully to the condition that follows the TEST Complex Router. The condition Fails and the case is processed back to the ROUTE66 Complex Router, the APPRAISE Step is then processed. What happens next?



- A. The case proceeds directly to TEST.
- B. As ROUTE66 is processed, all steps preceding the Wait are set to Not Processed.
- C. The Wait step waits for the APPOINT and REVAPP steps to process to TEST as normal.
- D. The condition under the APPOINT step calls a script that changes the status of APPOINT and NOTIFY to Not Released.

Answer: A

20. During the processing of a case, you may at any time need to accept changed data, without affecting the main process flow. Which two methods allow you to do this? (Choose two.)

- A. use a standalone Event step
- B. use an Event step that starts a parallel flow
- C. call an Event via a script to check a database for changed values
- D. perform another Case Start at the step where you want the data to be valid
- E. place an Event step, which joins the main flow by linking to one of the steps, in that flow

Answer: AB