

PASSTCERT

QUESTION & ANSWER

Higher Quality
Better Service!

We offer free update service for one year
[HTTP://WWW.PASSTCERT.COM](http://www.passtcert.com)

Exam : VCP-550

**Title : VMware Certified
Professional on vSphere 5.5**

Version : Demo

1.An administrator is planning a vSphere infrastructure with the following specific networking requirements:

- The ability to shape inbound (RX) traffic
- Support for Private VLANs (PVLANS)
- Support for LLDP (Link Layer Discovery Protocol)

What is the minimum vSphere Edition that will support these requirements?

- A. vSphere Essentials Plus
- B. vSphere Standard
- C. vSphere Enterprise
- D. vSphere Enterprise Plus

Answer: D

2.What two IT infrastructure components are virtualized by vSphere Essentials? (Choose two.)

- A. Networks
- B. Applications
- C. Storage
- D. Management

Answer: A,C

3.An administrator attempts to install vCenter Single Sign-On Server. The installer returns an error message indicating that the installation failed. Prior to the installation, all setup prerequisites were met. The administrator has generated a vCenter Server Single Sign-On support bundle.

Which two files should the administrator analyze to determine the cause of the failure? (Choose two.)

- A. Server\utils\logs\imsTrace.log
- B. Server\utils\logs\install.txt
- C. %TEMP%\utils\logs\vminst.log
- D. %TEMP%\vminst.log

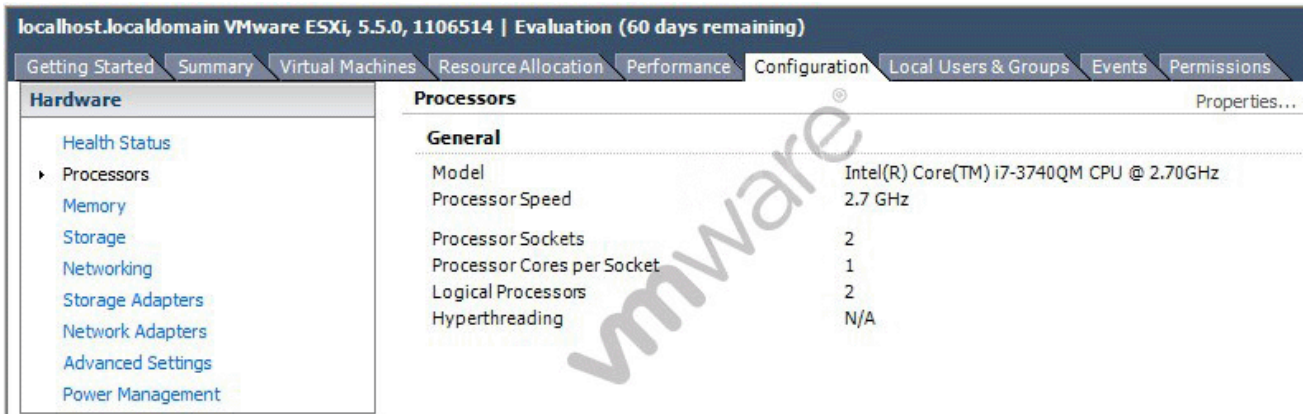
Answer: A,D

4.Which Single Sign-On deployment mode should an administrator use for two 5.x vCenter Servers configured with linked mode?

- A. Basic Single Sign-On with vCenter Server Heartbeat
- B. Multisite Single Sign-On
- C. Basic Single Sign-On
- D. Single Sign-On with Linked Mode

Answer: B

5.Which two statements below could explain why the vSphere Client is reporting N/A for hyperthreading? (Choose two.) The physical CPUs in the host do not support hyperthreading.



- A. Hyperthreading is disabled in the host's BIOS.
- B. The physical CPUs in the host are not multi-core.
- C. The number of CPUs meets or exceeds the maximum without hyperthreading.

Answer: A,B

6.Immediately after installing an ESXi host, an administrator needs to examine the following log files:

- /var/log/hostd.log
- /var/log/vmkernel.log
- /var/log/vpxa.log

Which two connections would allow an administrator to examine these files? (Choose two.)

- A. Connecting to the Direct Console User Interface
- B. Attaching a vSphere Client directly to the ESXi host
- C. Attaching the vSphere Web Client directly to the ESXi host
- D. Attaching the vSphere Client to the vCenter Server managing the ESXi host

Answer: A,B

7.An administrator is upgrading a vSphere Distributed Switch. The existing switch is version 5.0 and the administrator wants to upgrade to the latest version possible. The environment contains several ESXi 5.1 hosts.

Which two options are available to ensure that the upgraded switch will be compatible with these hosts? (Choose two.)

- A. Upgrade the vSphere Distributed Switch to 5.5
- B. Upgrade the ESXi 5.1 hosts to version 5.5, then upgrade the vSphere Distributed Switch to 5.5
- C. Upgrade the vSphere Distributed Switch to 5.1
- D. Upgrade the ESXi host switches to 5.5, then upgrade the vSphere Distributed Switch to 5.5

Answer: B,C

8.To avoid unnecessary planned downtime, what is the minimum version of VMware Tools that, if installed, will decrease the need for virtual machine reboots following VMware Tools upgrades?

- A. 5.5
- B. 5.1
- C. 5.0
- D. 4.1

Answer: B

9.Which two Identity Sources are available to add for vCenter Single Sign-On authentication? (Choose two.)

- A. LocalOS
- B. OpenLDAP
- C. NIS as an LDAP Server
- D. VCMSDS

Answer: A,B

10.Which VLAN configuration requires switch connectivity defined as an access port?

- A. Private VLAN
- B. External Switch Tagging
- C. Virtual Guest Tagging
- D. Virtual Switch Tagging

Answer: B

11.An administrator needs to deploy several virtual machines. Storage contention between the virtual machines should be managed by the VMkernel. Some of the virtual machines will use MSCS and should be highly available across the ESXi 5.5 hosts.

Which two storage options meet these requirements? (Choose two.)

- A. iSCSI
- B. NFS
- C. Fibre Channel
- D. vSAN

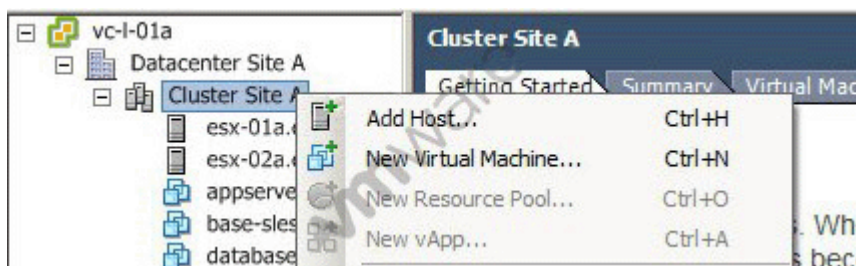
Answer: A,C

12.Which two precautions should a vSphere administrator take before increasing the size of a VMFS datastore? (Choose two.)

- A. Unmount the datastore
- B. Perform a rescan to ensure that all hosts see the most current storage
- C. Quiesce I/O on all disks involved
- D. Shut down all virtual machines stored in the datastore

Answer: B,C

13.What action should the vSphere administrator take to allow for a new vApp to be created in the cluster?



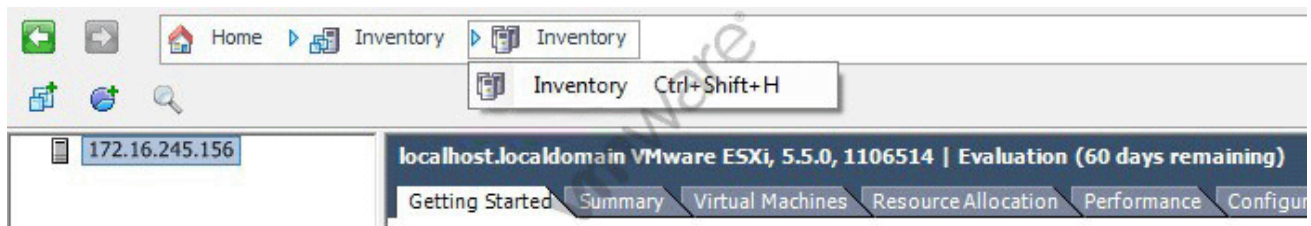
- A. Enable Distributed Resource Scheduling on the cluster

- B. Create a Resource Pool in the cluster, and create the vApp in the Resource Pool
- C. Enable High Availability on the cluster
- D. Create a new Datacenter, and create the vApp in the new Datacenter

Answer: A

14.A vSphere administrator receives a report of an issue with a vApp.

After connecting to the environment with the vSphere Client, the administrator does not see the vApp, but instead sees the inventory shown in the exhibit.



What explains this behavior?

- A. The administrator is connected to the ESXi host running the vApp.
- B. The administrator is using the Web Client.
- C. The vApp is in a partially deleted state.
- D. The vApp has been converted to a resource pool.

Answer: A

15.A system administrator is unable to clone a windows 2008 server while connected directly to an ESXi host through vSphere Client.

Which two methods can be used to complete the task? (Choose two.)

- A. Connect to vCenter Server and retry the operation.
- B. Use VMware Converter to perform the operation.
- C. Connect to the host using the Web Client and retry the operation.
- D. Use VMware Configuration Manager to perform the operation.

Answer: A,B

16.An administrator needs to create and provision new virtual machines from a master image that can not be edited or powered on.

Which type of resource is most appropriate for the administrator to perform the task?

- A. Full Clone
- B. Linked Clone
- C. Template
- D. Snapshot

Answer: C

17.A vSphere administrator is unable to vMotion a virtual machine between two hosts. An error message indicates that the USB device is not accessible on the target host.

What is causing this issue?

- A. The USB device was not enabled for vMotion when it was added to the virtual machine.
- B. ESXi does not support vMotion with a USB device attached to the virtual machine.

- C. The VMkernel port for vMotion is not enabled for USB traffic.
- D. The virtual machine has the wrong USB controller installed.

Answer: A

18.A vSphere administrator needs to configure a virtual machine to meet a guaranteed CPU performance profile.

Which configuration setting could the administrator choose?

- A. Set the CPU Limit to High
- B. Set the CPU Shares to 500MHz
- C. Set the CPU Guarantee to High
- D. Set the CPU Reservation to 500MHz

Answer: D

19.An organization's datastores are configured in a fully automated Storage Distributed Resource Scheduler (SDRS) cluster. The vSphere administrator determines that virtual machines are being migrated between datastores even though the datastores look evenly balanced. On further investigation, the administrator determines that the datastore's utilization percentages differ by 2%.

Which Storage DRS setting should the administrator change to prevent the virtual machines from migrating prematurely?

- A. Edit the Storage DRS cluster settings to increase the percentage of the Space Utilization Difference threshold
- B. Edit the Storage DRS cluster settings to increase the percentage of the I/O imbalance threshold
- C. Edit the Storage DRS cluster settings to increase the size of the Space Utilization Difference threshold
- D. Edit the Storage DRS cluster settings to increase the size of the I/O imbalance threshold

Answer: A

20.A vSphere administrator enables Fault Tolerance on a powered off virtual machine that has the following configuration:

- The virtual machine's single thin provisioned virtual disk is sized at 100GB.
- The datastore that houses the virtual machine has 120GB of free space.

After Fault Tolerance has been configured, another administrator attempts to use Enhanced vMotion to move a 30GB virtual machine file into the same datastore and receives an error.

What condition could cause this behavior?

- A. Fault Tolerance inflated the virtual machine's virtual disk file.
- B. Fault Tolerance created a temporary logging file on the same datastore.
- C. Fault Tolerance created a secondary copy of the virtual machine's virtual disk file.
- D. The Fault Tolerance logging file ran out of disk space.

Answer: A